



Sony Ericsson

Working Instructions

- mechanical -



Xperia™ mini

ST15i, ST15a, S51SE



CONTENTS

1	Exterior Views.....	4
1.1	ST15i, ST15a, S51SE	4
2	Tools	5
3	Disassembly.....	6
3.1	Battery Cover.....	6
3.2	Cap USB.....	7
3.3	Inner Frame	8
3.4	Audio Jack Connector	9
3.5	Main PBA	10
3.6	Support LCD.....	12
3.7	Front Cover & Display 3.0 TFT	13
4	Replacement	14
4.1	Battery Cover.....	14
4.2	Cap USB.....	14
4.3	Inner Frame	14
4.4	Audio Jack Connector	14
4.5	Support LCD.....	15
4.6	Display 3.0 TFT.....	15
4.7	Front Cover.....	15
4.8	Adhesive 3 x 6	16
4.9	Adhesive 7,8 x 1,4	18
4.10	Adhesive Conductive 5 x 2.....	19
4.11	Adhesive Irregular.....	20
4.12	Camera 5 MPixel.....	22
4.13	Co-brand	24
4.14	Cushion 5 x 2.....	25
4.15	Cushion 7 x 7.....	26
4.16	Dome Sheet	27
4.17	Earspeaker.....	28
4.18	Foil Grounding Camera	29
4.19	Gasket 15 x 7	30
4.20	Gasket 7,3 x 1,5	31
4.21	Gasket 8 x 3 semicircular	32
4.22	Gasket Audio Jack	33
4.23	Gasket Camera	34
4.24	Gasket Camera/Flash.....	35
4.25	Gasket Conductive 19 x 11	36
4.26	Gasket Loudspeaker	37



4.27	Gasket Mic	38
4.28	Gasket Net Mic	39
4.29	Gasket Proxy	40
4.30	Gasket RGB LED	41
4.31	Key On/Off	42
4.32	Label Mobile Phone.....	43
4.33	Net Loudspeaker mesh.....	44
4.34	Shield Can Lid ABB.....	45
4.35	Shield Can Lid BT/WLAN.....	46
4.36	Shield Can Lid Camera	47
4.37	Shield Can Lid DBB.....	48
4.38	Shield Can Lid RF	49
4.39	Tape Proximity Reflective.....	50
4.40	Water Indicator 5x5	51
4.41	Window Camera	52
4.42	Board Swap	54
4.42.1	Board Swap – Replacement.....	54
4.42.2	Board Swap – Change Label	54
4.42.3	Board Swap – Customize of Software	54
5	Reassembly.....	55
5.1	Front Cover & Display 3.0 TFT	55
5.2	Support LCD.....	55
5.3	Main PBA	57
5.4	Audio Jack Connector	59
5.5	Inner Frame	60
5.6	Cap USB.....	61
5.7	Battery Cover.....	62
6	Country of Origin Barcodes for Brazil.....	63
7	Revision History	64

**For general information about mechanical repair related issues, refer to
1220-1333: Generic Repair Manual - mechanical**



1 Exterior Views

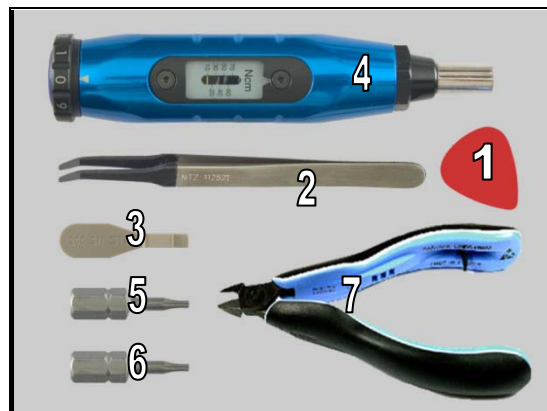
1.1 ST15i, ST15a, S51SE



2 Tools

SPECIAL TOOLS

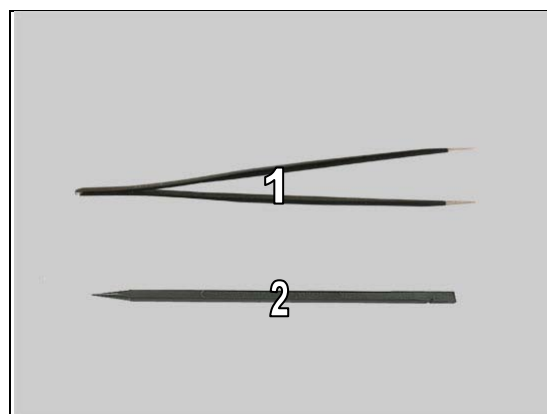
1. Guitar Pick
2. Flex Film Assembly Tool
3. Front Opening Tool
4. Torque Screwdriver
5. Bit(T5)
6. Bit(T6)
7. Pliers



For part no's on the tools above, refer to the 'Tools Catalogue/Matrix'!

STANDARD TOOLS

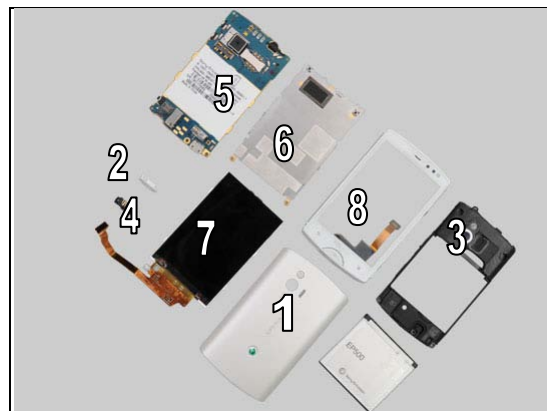
1. Tweezers
2. Nylon Pointer



3 Disassembly

The disassembly is done in the following order:

1. Battery Cover
2. Cap USB
3. Inner Frame
4. Audio Jack Connector
5. Main PBA
6. Support LCD
7. Display 3.0 TFT
8. Front Cover



3.1 Battery Cover

There are ten hooks to secure the Battery Cover.



Push to unsnap the four hooks.



Turn over the Batter Cover to release the other hooks and remove it.



Disassembly

Lift up the Battery.



Remove the Battery.



3.2 Cap USB

Open the Cap USB.



Pull to remove the Cap USB.

Scrap! Not to be reused!





Disassembly

3.3 Inner Frame

Remove the three Screws with a screwdriver with Bits (T5).

Scrap! Not to be reused!



Remove the two Screws with a screwdriver with Bits (T5).



There are two hooks by the arrows.



Insert the Guitar Pick between the Inner Frame and the Front Cover.

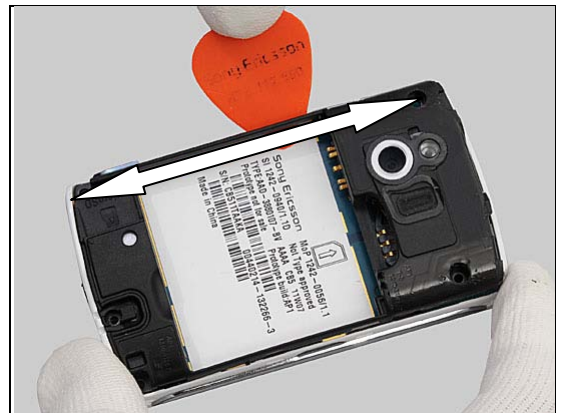


Disassembly

Unsnap the hook by sliding the Guitar Pick along the side.



Repeat the action along the other side.

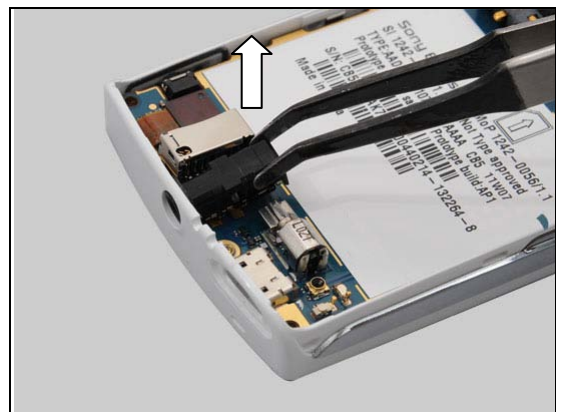


Lift up to remove the Inner Frame.



3.4 Audio Jack Connector

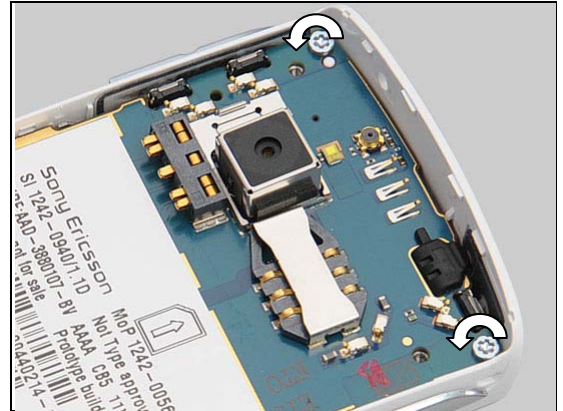
Remove the Audio Jack Connector.



Disassembly

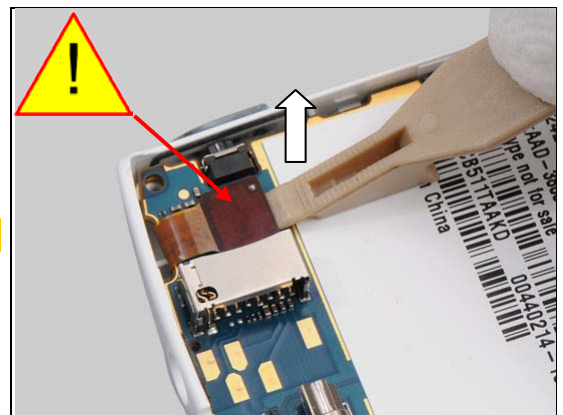
3.5 Main PBA

Remove the two Screws with a screwdriver with (Bits) T6.

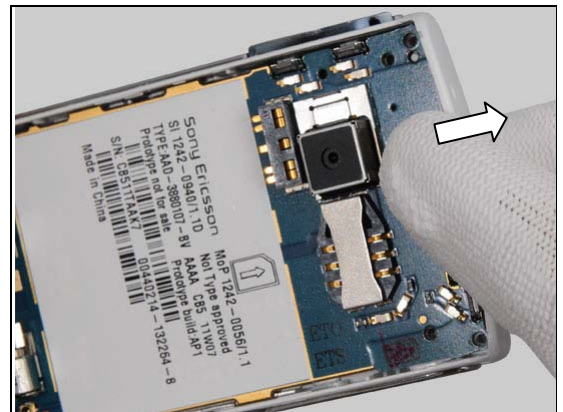


Disconnect the BtB connector with the Front Opening Tool.

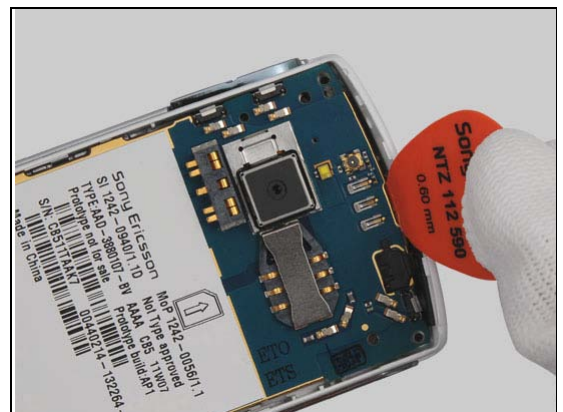
Be careful not to damage the BtB connector!



Bend the top of the Front Cover slightly with your thumb to release the Main PBA.



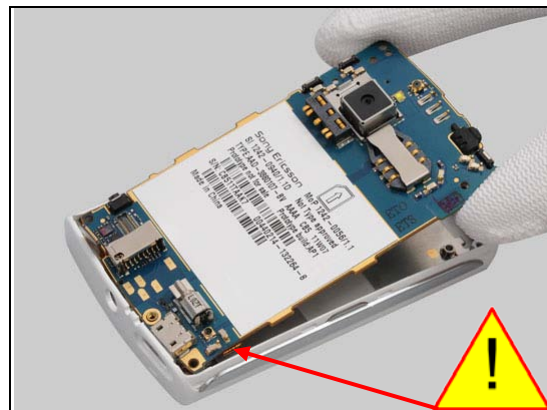
Insert the Guitar Pick to raise the Main PBA.



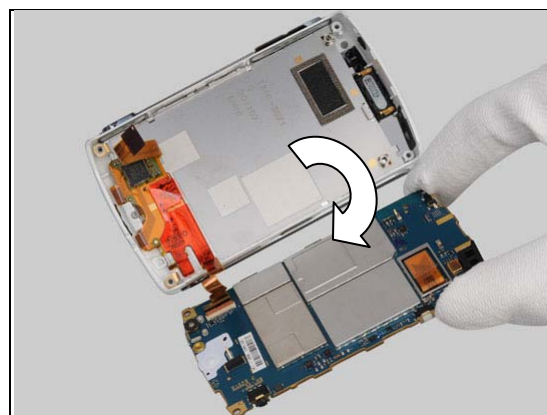
Disassembly

Lift up the top of Main PBA gently.

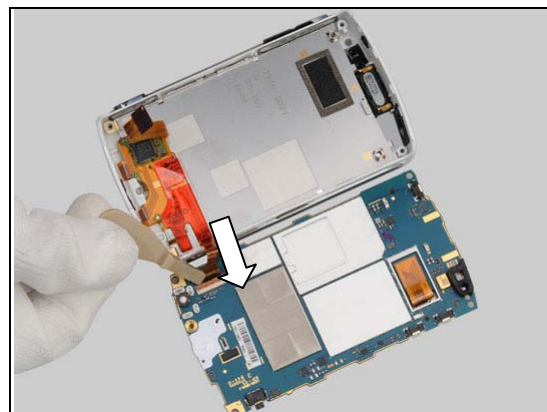
Do not stretch the flex film!



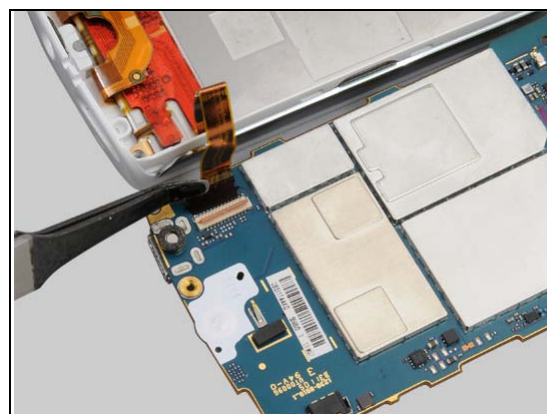
Turn over the Main PBA.



Open the ZIF connector with the Front Opening Tool.

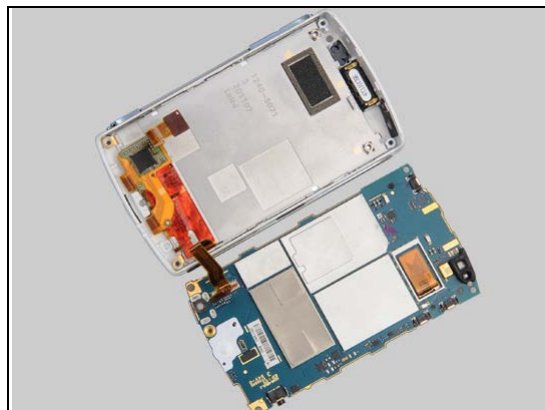


Release the flex film with the Flex Film Assembly Tool.



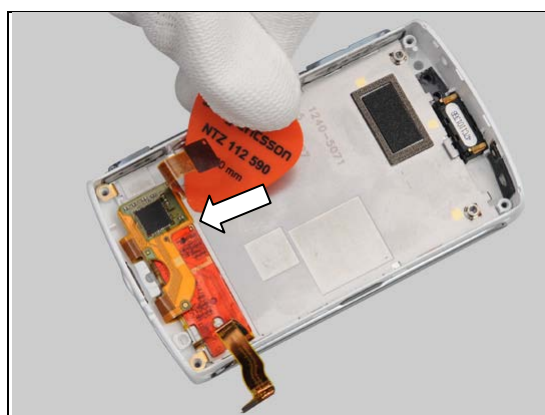
Disassembly

Separate the front unit from the Main PBA.



3.6 Support LCD

Release the flex films gently with the Guitar Pick.



Insert the Guitar Pick to release the Support LCD from the Front Cover.

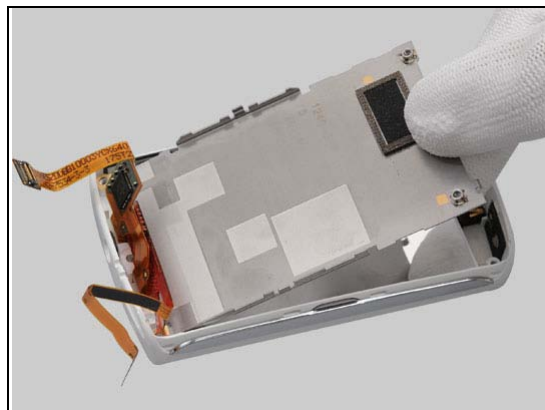


Repeat the action on the opposite side.



Disassembly

Lift up and remove the Support LCD.



3.7 Front Cover & Display 3.0 TFT

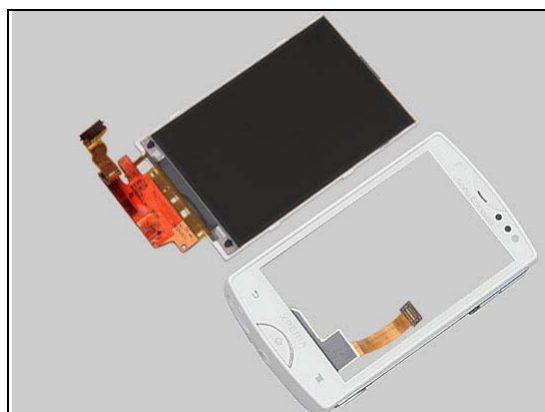
Release gently the hooks with the Guitar Pick.



Lift up and remove the Display 3.0 TFT.



Separate the Front Cover and the Display 3.0 TFT.



4 Replacement

4.1 Battery Cover

Follow the 3.1 Disassembly instructions.

Prepare the new Battery Cover.

Follow the 5.7 Reassembly instructions.



4.2 Cap USB

Follow the 3.1 – 3.2 Disassembly instructions.

Prepare the new Cap USB.

Follow the 5.6 – 5.7 Reassembly instructions.



4.3 Inner Frame

Follow the 3.1 – 3.3 Disassembly instructions.

Prepare the new Inner Frame.

Follow the 5.5 – 5.7 Reassembly instructions.



4.4 Audio Jack Connector

Follow the 3.1 – 3.4 Disassembly instructions.

Prepare the new Audio Jack Connector.

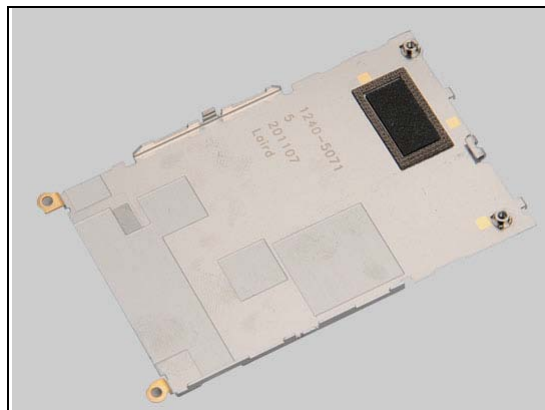
Follow the 5.4 – 5.7 Reassembly instructions.



Replacement

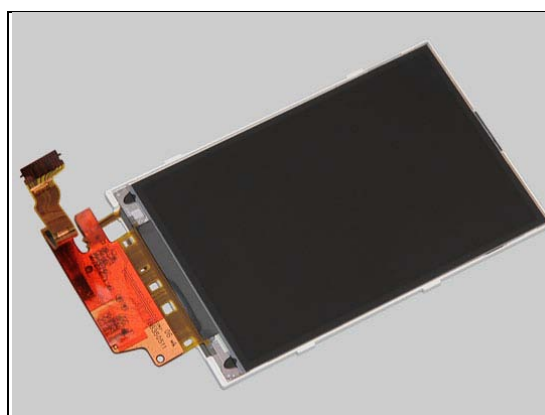
4.5 Support LCD

*Follow the 3.1 – 3.6 Disassembly instructions.
Prepare the new Support LCD.
Follow the 5.2 – 5.7 Reassembly instructions.*



4.6 Display 3.0 TFT

*Follow the 3.1 – 3.7 Disassembly instructions.
Follow the 4.11 Removal instructions.
Prepare the new Display 3.0 TFT.
Follow the 4.11 Installation instructions.
Follow the 5.1 – 5.7 Reassembly instructions.*



4.7 Front Cover

*Follow the 3.1 – 3.7 Disassembly instructions.
Follow the 4.17 Removal instructions.
Prepare the new Front Cover.
Follow the 4.17 Installation instructions.
Follow the 5.1 – 5.7 Reassembly instructions.*

Touch panel calibration has to be performed for all replaced units; 1257-2706 Trouble Shooting Application – mechanical.



Do not touch the front's touch screen when you start up the phone the first time after a touch calibration until the screen lights up and the Sony Ericsson / Sony logo shows in the display!

Replacement

4.8 Adhesive 3 x 6

*Follow the 3.1 – 3.5 Disassembly instructions.
Carry out the Removal as described below.
Prepare the new Adhesive 3 x 6.
Carry out the Installation as described below.
Follow the 5.3 – 5.7 Reassembly instructions.*

REMOVAL

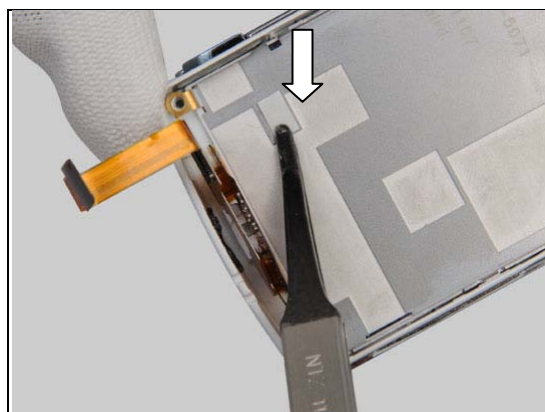
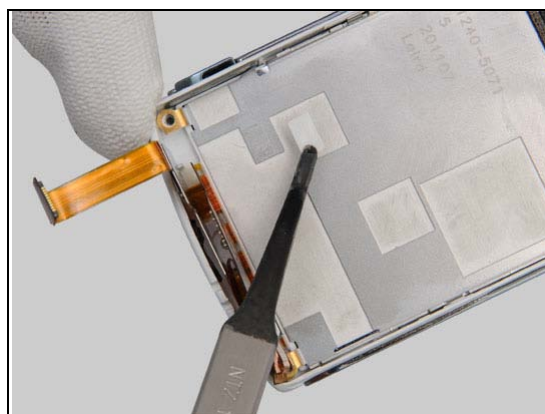
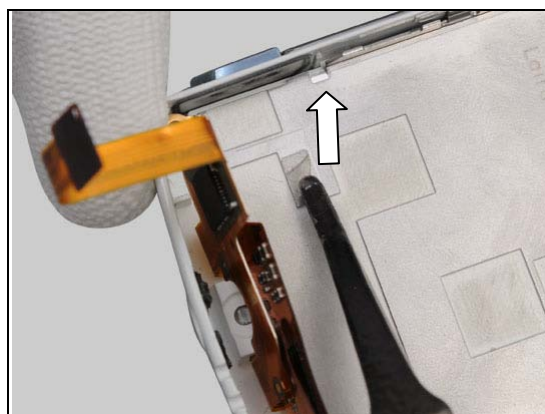
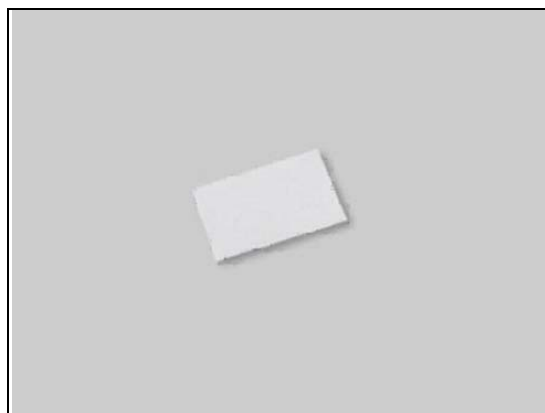
Remove the old Adhesive 3 x 6.

Replace the Adhesive 3 x 6 every time the flex films have been released from the Support LCD!

INSTALLATION

Mount a new Adhesive 3 x 6.

Press to secure the attachment.

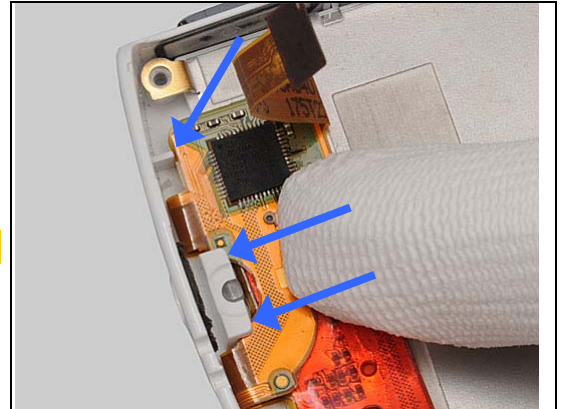




Reassembly

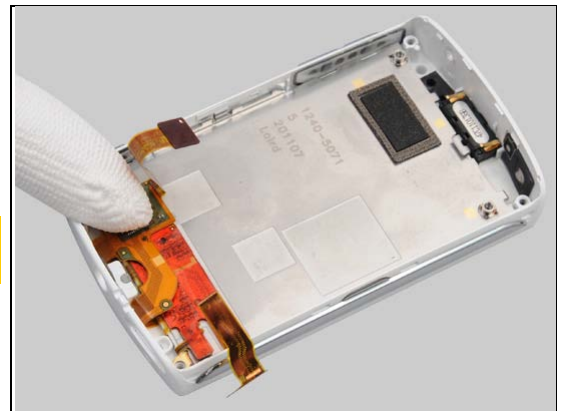
Push the flex film underneath the hooks in the Front Cover and align the stiffener to the location pin.

Secure the position of the flex film carefully.

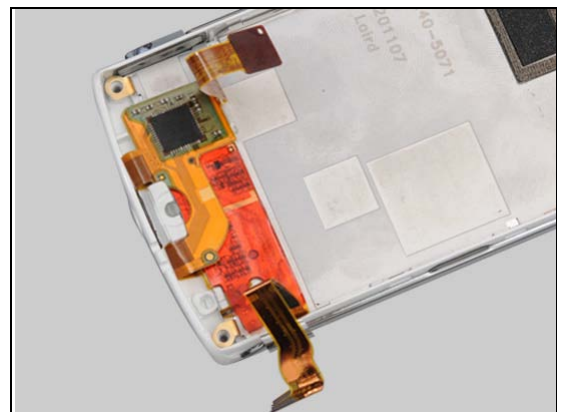


Press the flex film gently to secure its attachment to the Adhesive 3 x 6.

Be careful not to damage the electrical components on the flex films.



Pre-bend both the flex films before the main PBA is reassembled.





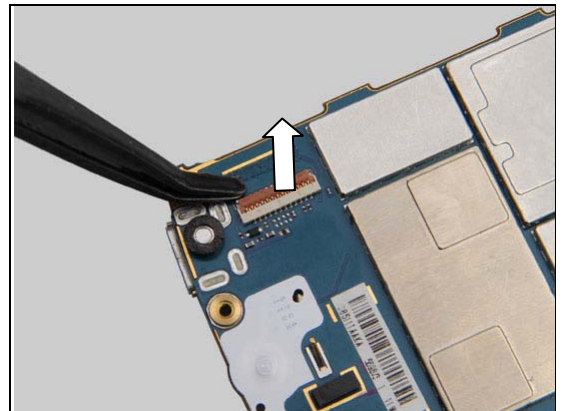
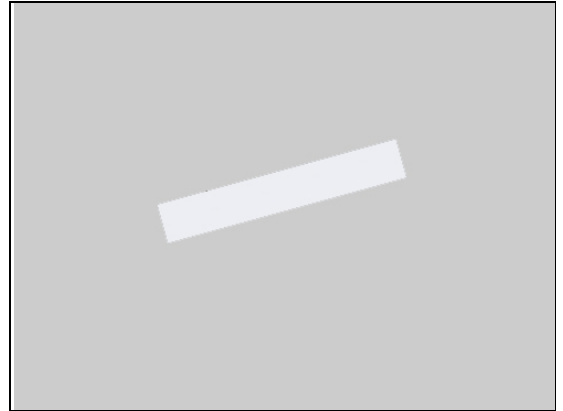
Replacement

4.9 Adhesive 7,8 x 1,4

*Follow the 3.1 – 3.5 Disassembly instructions.
Carry out the Removal as described below.
Prepare the new Adhesive 7,8 x 1,4.
Carry out the Installation as described below.
Follow the 5.3 – 5.7 Reassembly instructions.*

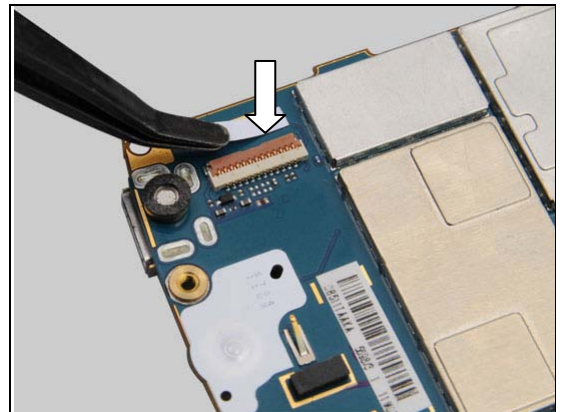
REMOVAL

Remove the old Adhesive 7,8 x 1,4.

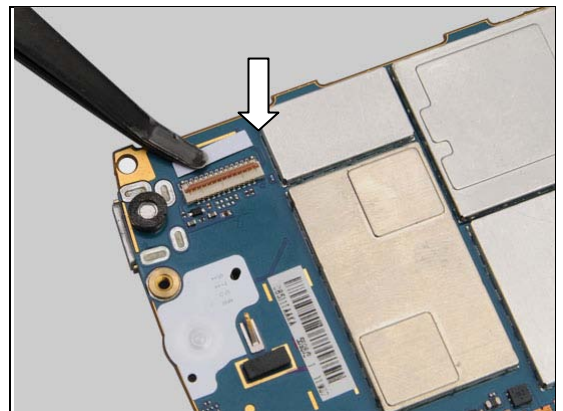


INSTALLATION

Mount a new Adhesive 7,8 x 1,4.



Press to secure its attachment.





Replacement

4.10 Adhesive Conductive 5 x 2

*Follow the 3.1 – 3.5 Disassembly instructions.
Carry out the Removal as described below.
Prepare the new Adhesive Conductive 5 x 2.
Carry out the Installation as described below.
Follow the 5.3 – 5.7 Reassembly instructions.*

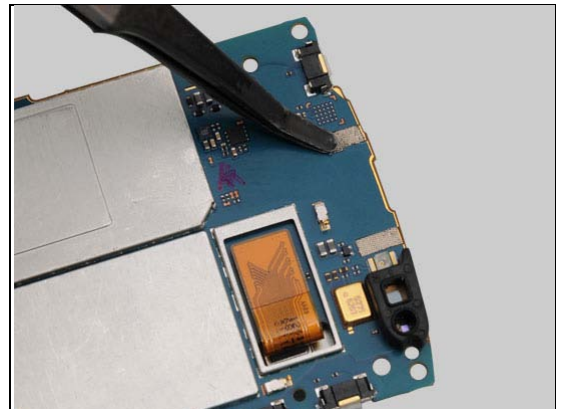
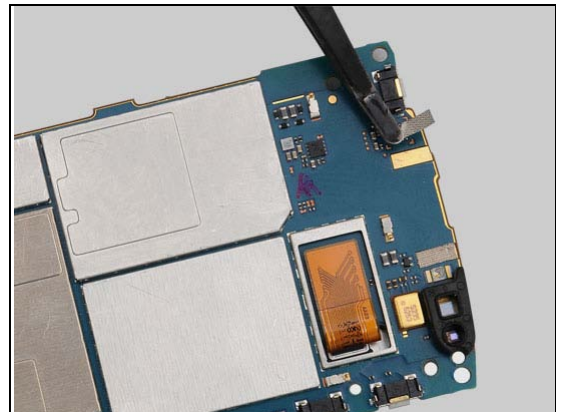
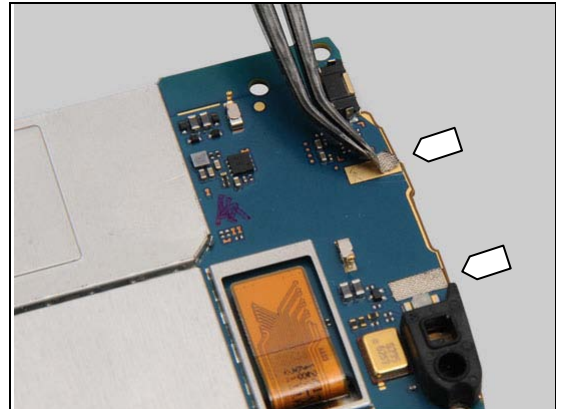
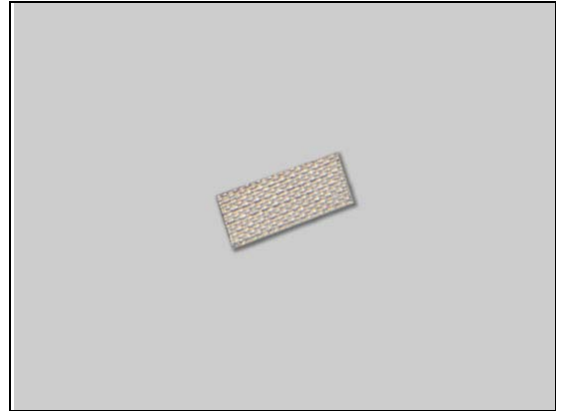
REMOVAL

There are two Adhesives Conductive 5 x 2.
Remove the old Adhesive Conductive 5 x 2.

INSTALLATION

Mount a new Adhesive Conductive 5 x 2.

Press to secure its attachment.



Replacement

4.11 Adhesive Irregular

*Follow the 3.1 – 3.5 Disassembly instructions.
Carry out the Removal as described below.
Prepare the new Adhesive Irregular.
Carry out the Installation as described below.
Follow the 4.8 Removal instructions.
Follow the 4.8 Installation instructions.
Follow the 5.3 – 5.7 Reassembly instructions.*

REMOVAL

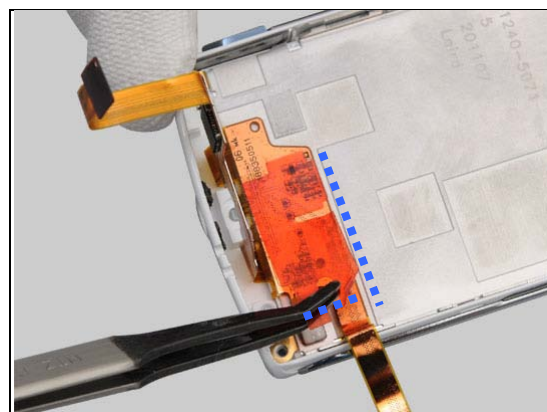
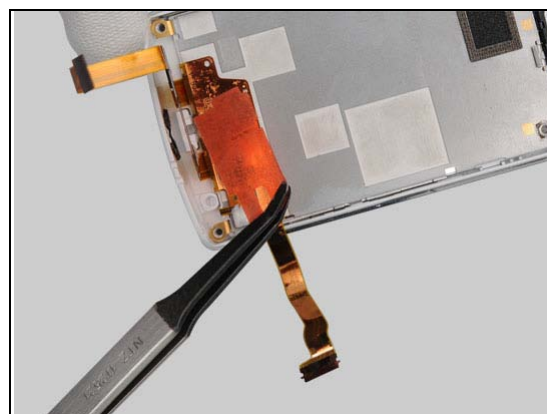
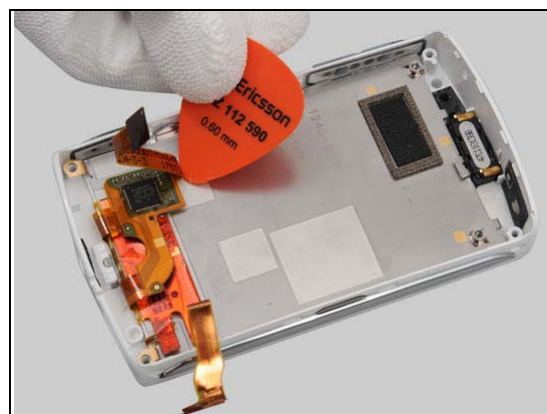
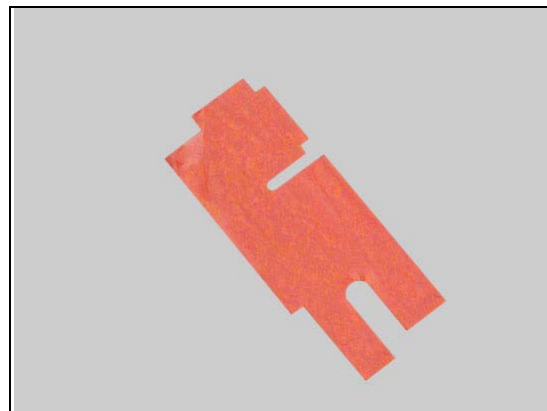
Release the flex film gently with the Guitar Pick.

Remove the Adhesive Irregular.

Be careful with the components on the flex film!

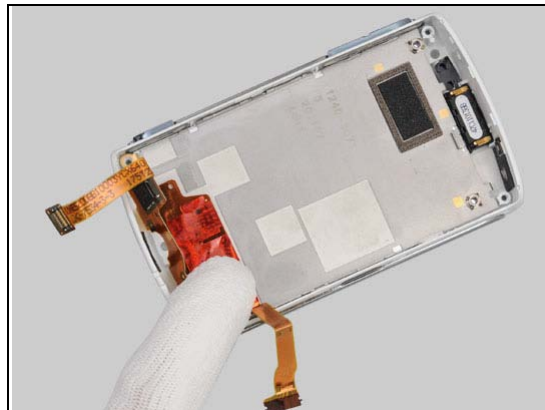
INSTALLATION

Mount a new Adhesive Irregular.
The Adhesive Irregular shall be aligned against two sides.



Replacement: Adhesive Irregular

Press to secure its attachment.



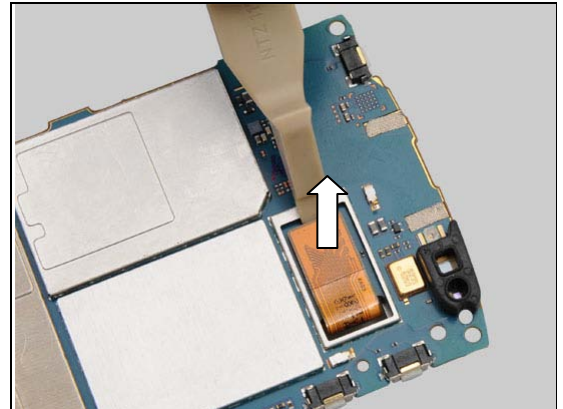
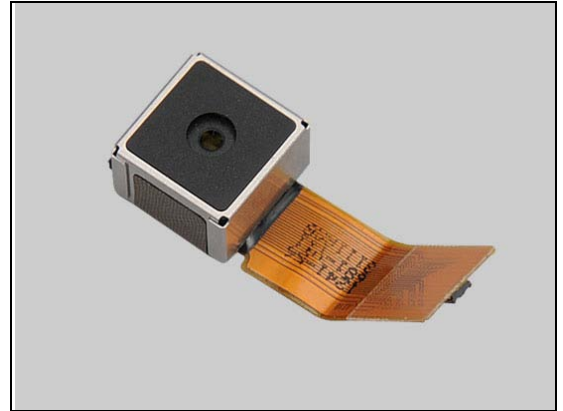
Replacement

4.12 Camera 5 MPixel

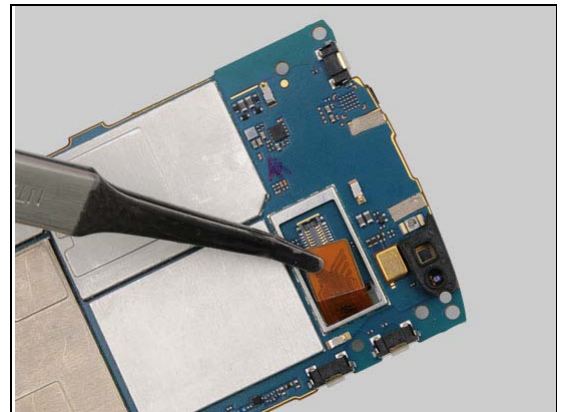
Follow the 3.1 – 3.5 Disassembly instructions.
 Follow the 4.36 Removal instructions.
 Carry out the Removal as described below.
 Prepare the new Camera 5 Mpixel.
 Follow the 4.20 Installation instructions.
 Carry out the Installation as described below.
 Follow the 4.36 Installation instructions.
 Follow the 5.3 – 5.7 Reassembly instructions.

REMOVAL

Unsnap the BtB connector.



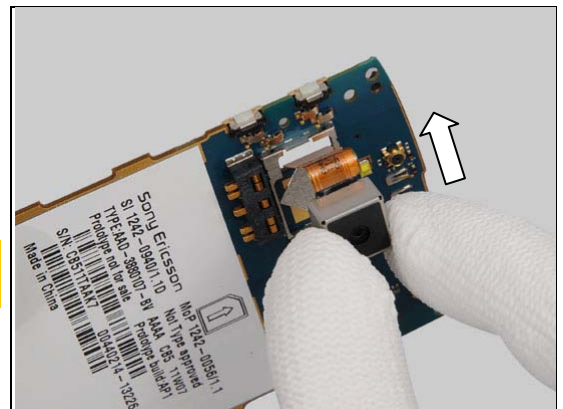
Remove the Camera 5 Mpixel.



INSTALLATION

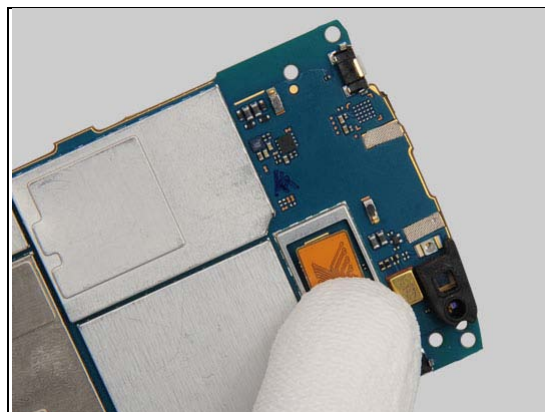
Mount the new Camera 5 Mpixel into the Main PBA.

Check that the Foil Grounding Camera is correct mounted, cornerwise!



Replacement: Camera 5 Mpixel

Connect the BtB connector.



Replacement

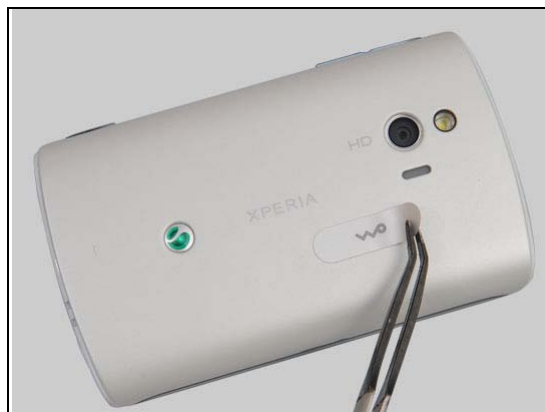
4.13 Co-brand

Carry out the Removal as described below.
Prepare the new Co-brand.
Carry out the Installation as described below.

REMOVAL

Remove the Co-brand with the Flex Film Assembly Tool.

Be careful not to damage the Battery Cover.
Scrap! Do not reuse the Co-brand!



INSTALLATION

Mount the new Co-brand on the Battery Cover.

There are special Battery Covers aimed for Co-brands.

Press to secure its attachment.



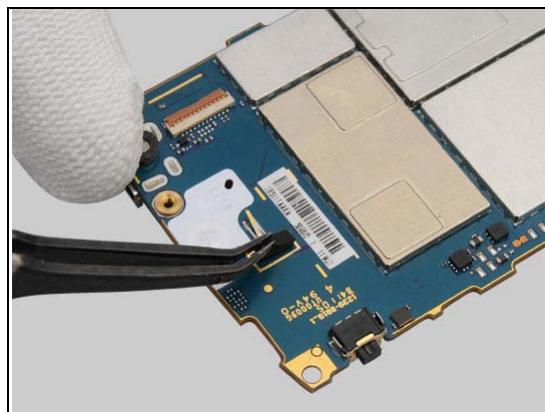
Replacement

4.14 Cushion 5 x 2

*Follow the 3.1 – 3.5 Disassembly instructions.
Carry out the Removal as described below.
Prepare the new Cushion 5 x 2.
Carry out the Installation as described below.
Follow the 5.3 – 5.7 Reassembly instructions.*

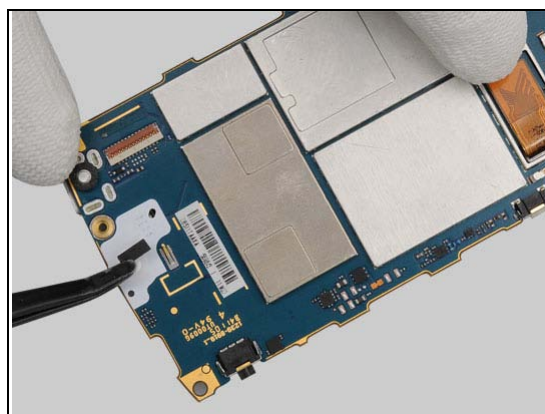
REMOVAL

Remove the old Cushion 5 x 2.

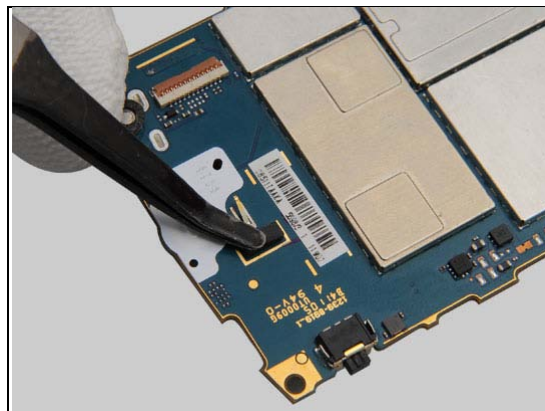


INSTALLATION

Mount a new Cushion 5 x 2.



Press to secure its attachment.



Replacement

4.15 Cushion 7 x 7

*Follow the 3.1 – 3.3 Disassembly instructions.
Carry out the Removal as described below.
Prepare the new Cushion 7 x 7.
Carry out the Installation as described below.
Follow the 5.5 – 5.7 Reassembly instructions.*

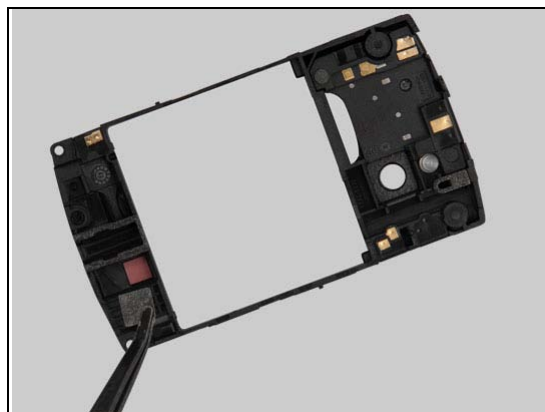
REMOVAL

Remove the old Cushion 7 x 7.



INSTALLATION

Mount a new Cushion 7 x 7.



Press to secure its attachment.





Replacement

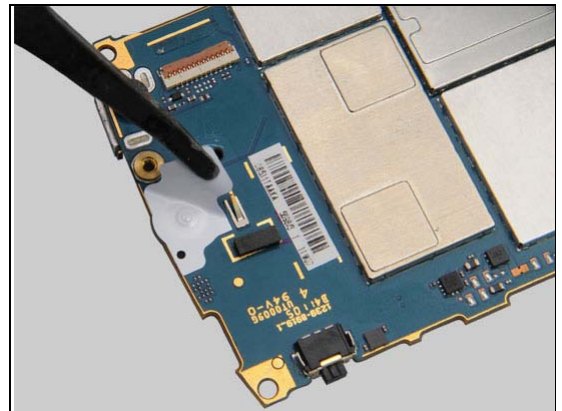
4.16 Dome Sheet

*Follow the 3.1 – 3.5 Disassembly instructions.
Carry out the Removal as described below.
Prepare the new Dome Sheet.
Carry out the Installation as described below.
Follow the 5.3 – 5.7 Reassembly instructions.*

REMOVAL

Remove the old Dome Sheet.

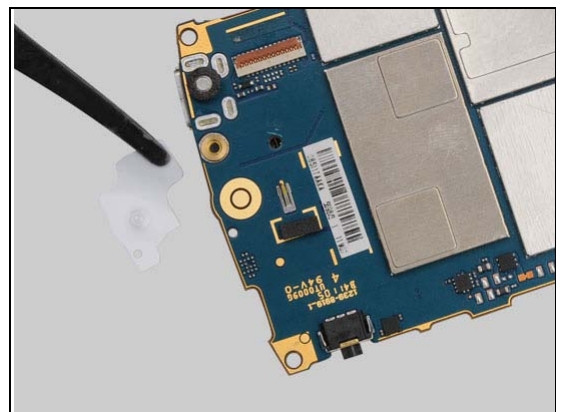
Scrap! Not to be reused!



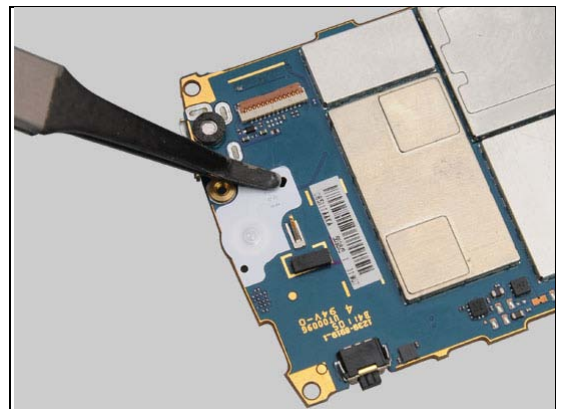
INSTALLATION

Mount a new Dome Sheet in the correct position.

Note the two guiding holes to secure its position.



Press to secure its attachment.



Replacement

4.17 Earspeaker

Follow the 3.1 – 3.5 Disassembly instructions.

Carry out the Removal as described below.

Prepare the new Earspeaker.

Follow the 4.39 Installation Instructions.

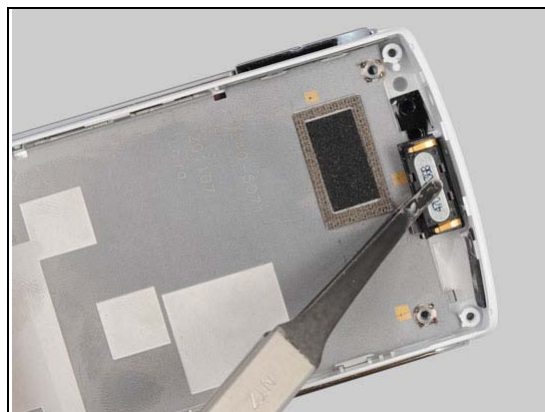
Carry out the Installation as described below.

Follow the 5.3 – 5.7 Reassembly instructions.

REMOVAL

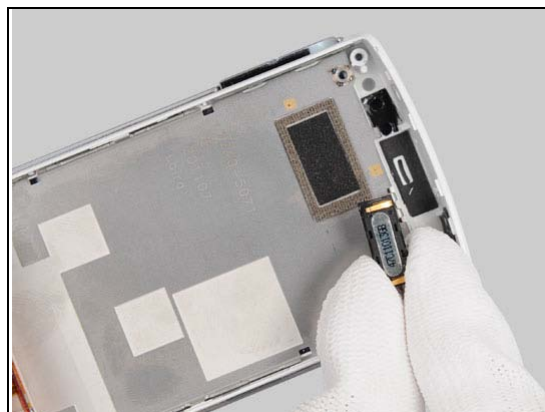
Remove the Earspeaker.

All remains of the adhesive should be removed.

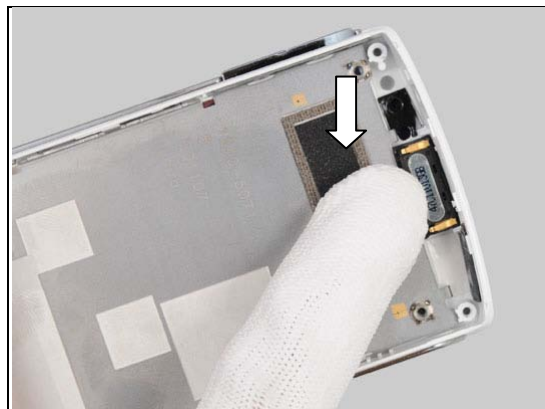


INSTALLATION

Mount a new Earspeaker.



Press to secure its attachment.





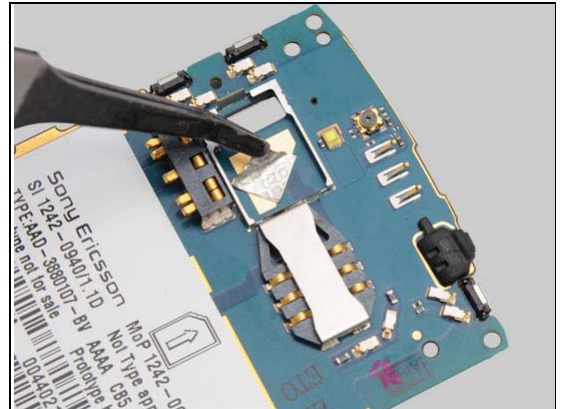
Replacement

4.18 Foil Grounding Camera

*Follow the 3.1 – 3.5 Disassembly instructions.
Follow the 4.36 and 4.12 Removal instructions.
Carry out the Removal as described below.
Prepare the new Foil Grounding Camera.
Carry out the Installation as described below.
Follow the 4.12 and 4.36 Installation instructions.
Follow the 5.3 – 5.7 Reassembly instructions.*

REMOVAL

Remove the Foil Grounding Camera.



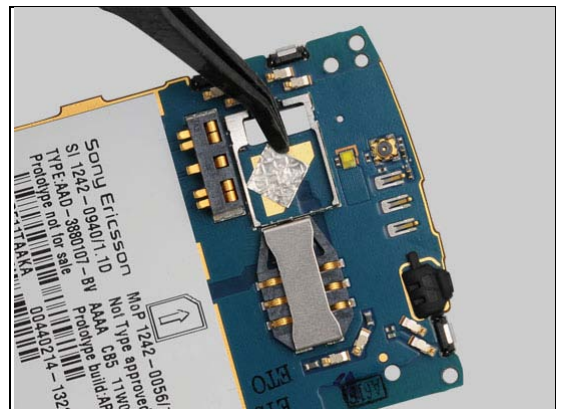
INSTALLATION

Mount a new Foil Grounding Camera in the correct position.

The Foil Grounding Camera should be mounted cornerwise.



Press to secure its attachment.



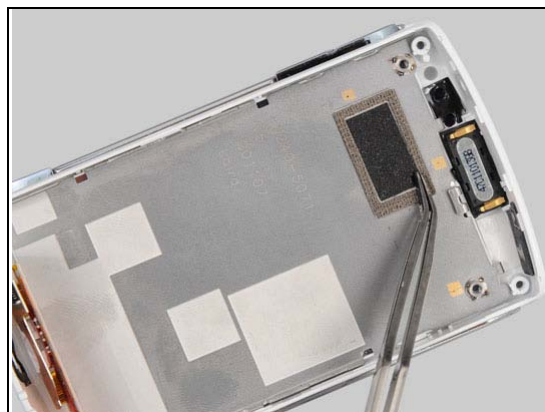
Replacement

4.19 Gasket 15 x 7

*Follow the 3.1 – 3.5 Disassembly instructions.
Carry out the Removal as described below.
Prepare the new Gasket 15 x 7.
Carry out the Installation as described below.
Follow the 5.3 – 5.7 Reassembly instructions.*

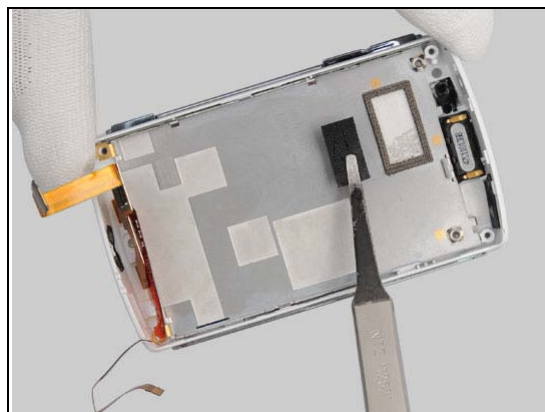
REMOVAL

Remove the old Gasket 15 x 7.



INSTALLATION

Mount a new Gasket 15 x 7.



Press to secure its attachment.





Replacement

4.20 Gasket 7,3 x 1,5

Follow the 3.1 – 3.3 Disassembly instructions.

Follow the 4.36 Removal instructions.

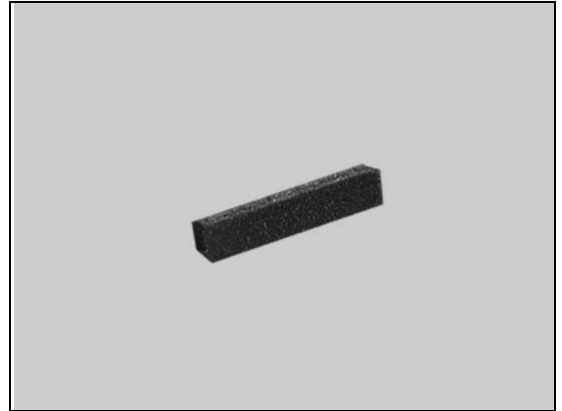
Carry out the Removal as described below.

Prepare the new Gasket 7,3 x 1,5.

Carry out the Installation as described below.

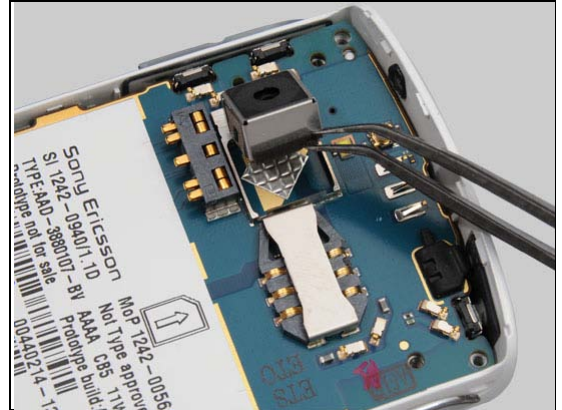
Follow the 4.36 Installation instructions.

Follow the 5.5 – 5.7 Reassembly instructions.



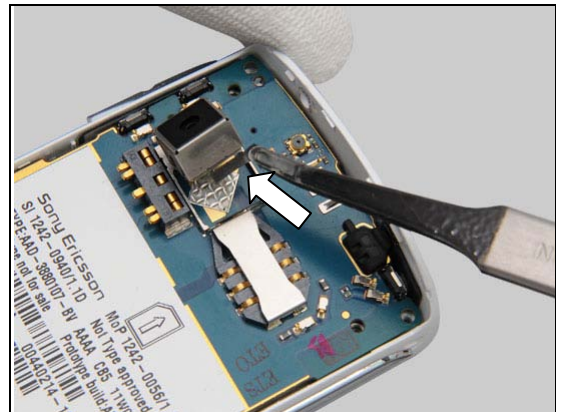
REMOVAL

Remove the old Gasket 7,3 x 1,5.

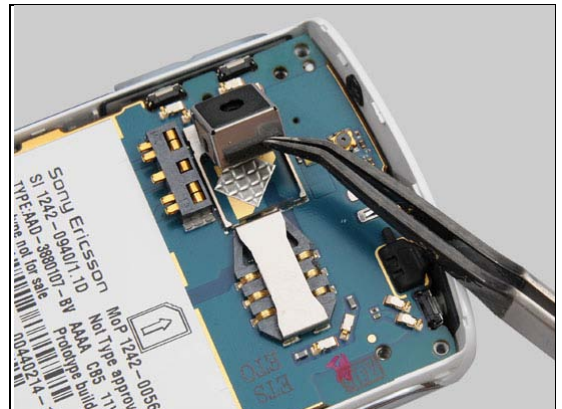


INSTALLATION

Mount a new Gasket 7,3 x 1,5.



Press to secure its attachment.



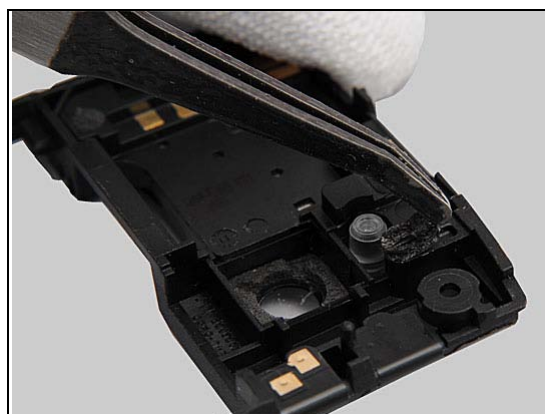
Replacement

4.21 Gasket 8 x 3 semicircular

*Follow the 3.1 – 3.3 Disassembly instructions.
Carry out the Removal as described below.
Prepare the new Gasket 8 x 3 semicircular.
Carry out the Installation as described below.
Follow the 5.5 – 5.7 Reassembly instructions.*

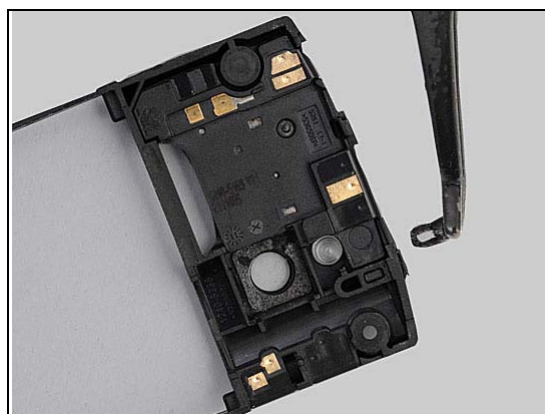
REMOVAL

Remove the old Gasket 8 x 3 semicircular.

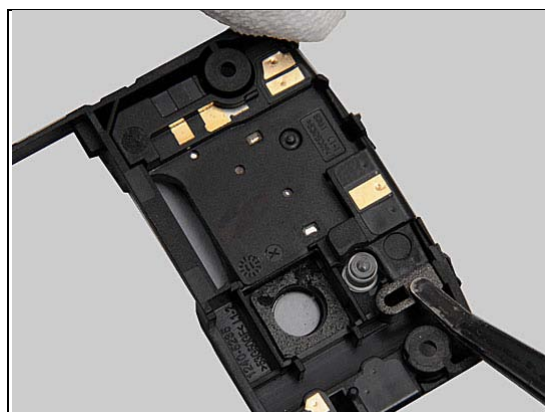


INSTALLATION

Mount a new Gasket 8 x 3 semicircular.



Press to secure its attachment.



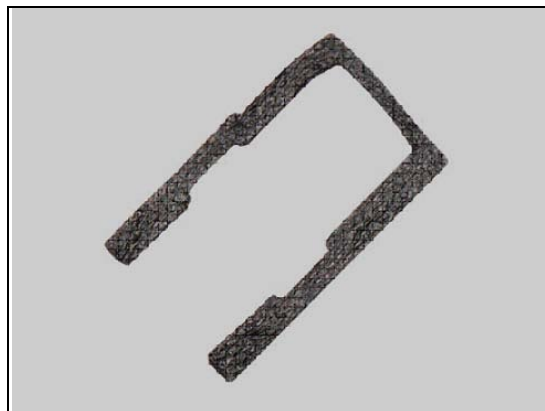
Replacement

4.22 Gasket Audio Jack

*Follow the 3.1 – 3.3 Disassembly instructions.
Carry out the Removal as described below.
Prepare the new Gasket Audio Jack.
Carry out the Installation as described below.
Follow the 5.5 – 5.7 Reassembly instructions.*

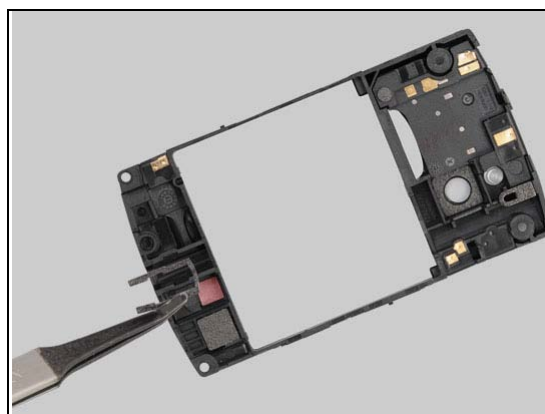
REMOVAL

Remove the old Gasket Audio Jack.



INSTALLATION

Mount a new Gasket Audio Jack.



Press to secure its attachment.



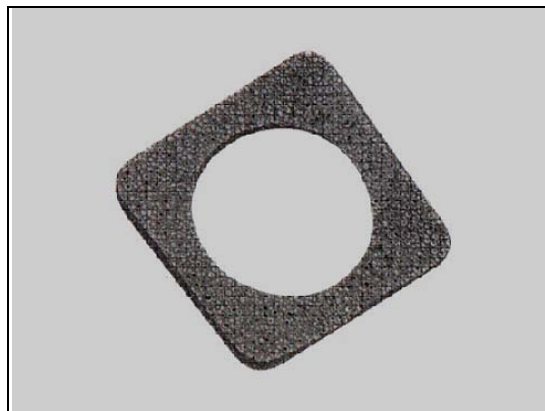
Replacement

4.23 Gasket Camera

*Follow the 3.1 – 3.3 Disassembly instructions.
Carry out the Removal as described below.
Prepare the new Gasket Camera.
Carry out the Installation as described below.
Follow the 5.5 – 5.7 Reassembly instructions.*

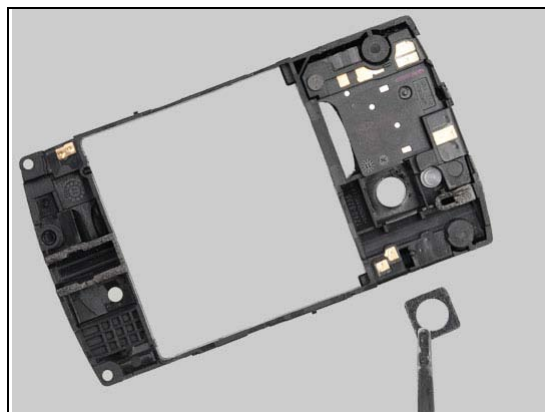
REMOVAL

Remove the old Gasket Camera.

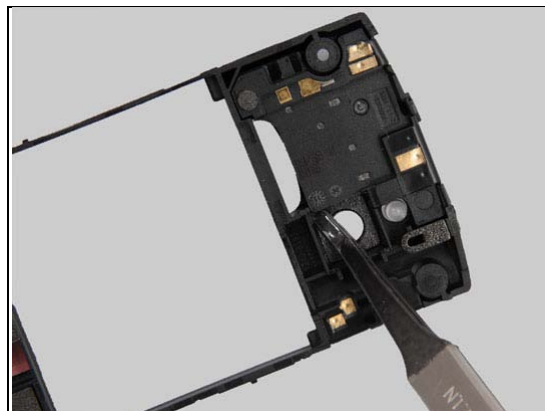


INSTALLATION

Mount a new Gasket Camera.



Press to secure its attachment.





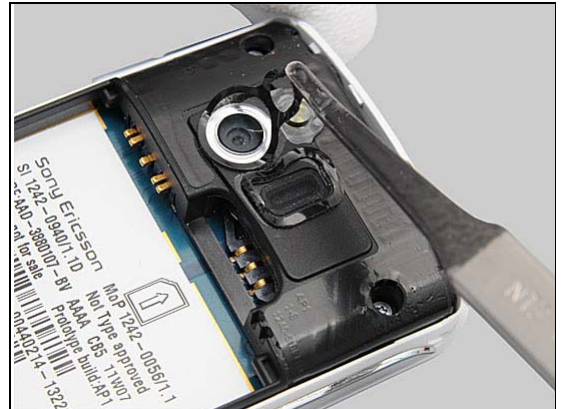
Replacement

4.24 Gasket Camera/Flash

*Follow the 3.1 Disassembly instructions.
Carry out the Removal as described below.
Prepare the new Gasket Camera/Flash.
Carry out the Installation as described below.
Follow the 5.7 Reassembly instructions.*

REMOVAL

Remove the old Gasket Camera.



INSTALLATION

Mount a new Gasket Camera.



Press to secure its attachment.



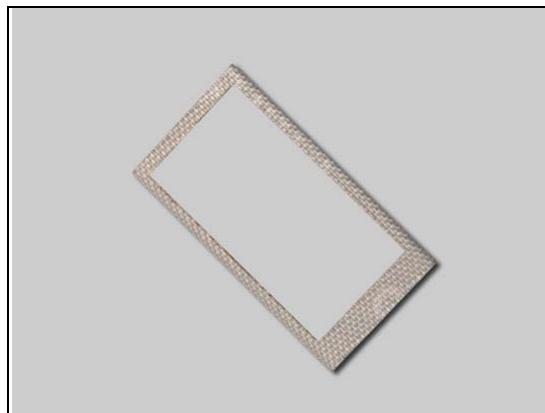
Replacement

4.25 Gasket Conductive 19 x 11

*Follow the 3.1 – 3.5. Disassembly instructions.
Carry out the Removal as described below.
Prepare the new Gasket Conductive 19 x 11.
Carry out the Installation as described below.
Follow the 5.3 – 5.7 Reassembly instructions.*

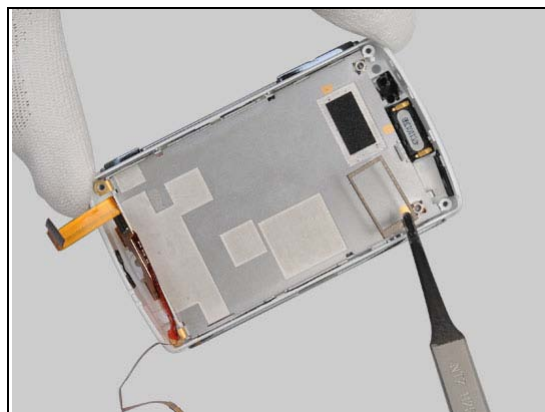
REMOVAL

Remove the old Gasket Conductive 19 x 11.

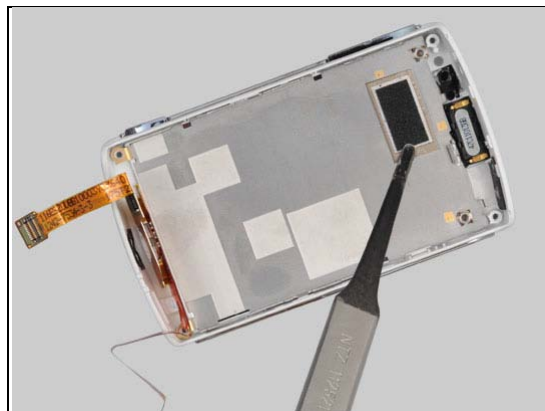


INSTALLATION

Mount a new Gasket Conductive 19 x 11.



Press to secure its attachment.



Replacement

4.26 Gasket Loudspeaker

Follow the 3.1 Disassembly instructions.
 Carry out the Removal as described below.
 Prepare the new Gasket Loudspeaker.
 Carry out the Installation as described below.
 Follow the 5.7 Reassembly instructions.

REMOVAL

Remove the old Gasket Loudspeaker.



INSTALLATION

Mount a new Gasket Loudspeaker.



Press to secure its attachment.



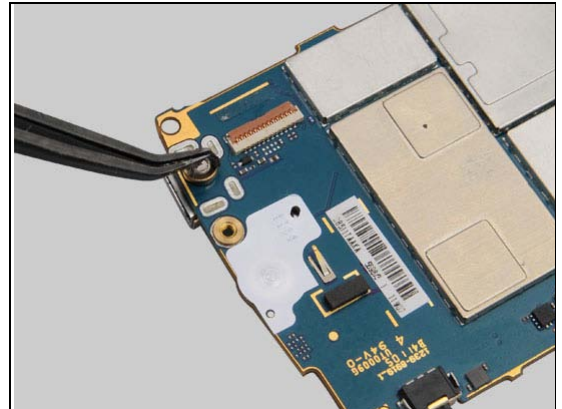
Replacement

4.27 Gasket Mic

*Follow the 3.1 – 3.5 Disassembly instructions.
Carry out the Removal as described below.
Prepare the new Gasket Mic.
Carry out the Installation as described below.
Follow the 5.3 – 5.7 Reassembly instructions.*

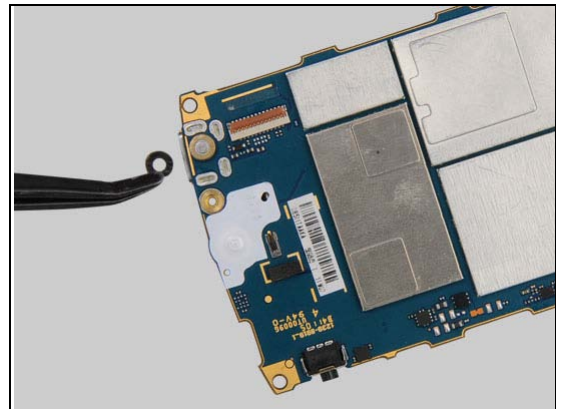
REMOVAL

Remove the Gasket Mic.

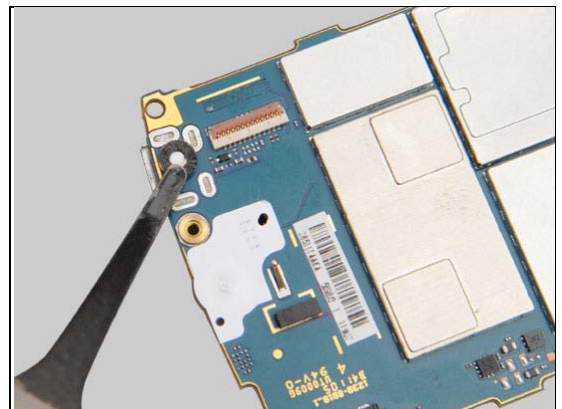


INSTALLATION

Mount a new Gasket Mic.



Press to secure its attachment.



Replacement

4.28 Gasket Net Mic

*Follow the 3.1 – 3.3 Disassembly instructions.
Carry out the Removal as described below.
Prepare the new Gasket Net Mic.
Carry out the Installation as described below.
Follow the 5.5 – 5.7 Reassembly instructions.*

REMOVAL

Remove the old Gasket Net Mic.



INSTALLATION

Mount a new Gasket Net Mic.



Press to secure its attachment.





Replacement

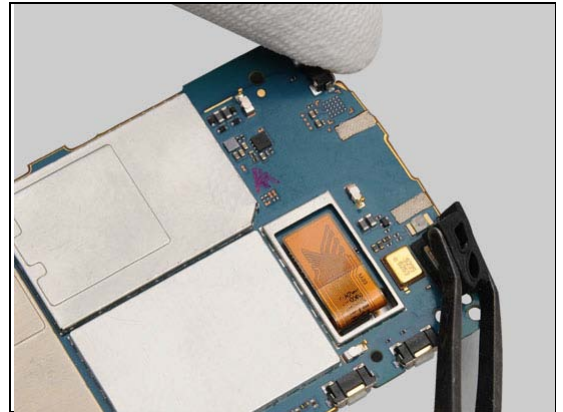
4.29 Gasket Proxy

*Follow the 3.1 – 3.5 Disassembly instructions.
Carry out the Removal as described below.
Prepare the new Gasket Proxy.
Carry out the Installation as described below.
Follow the 5.3 – 5.7 Reassembly instructions.*

REMOVAL

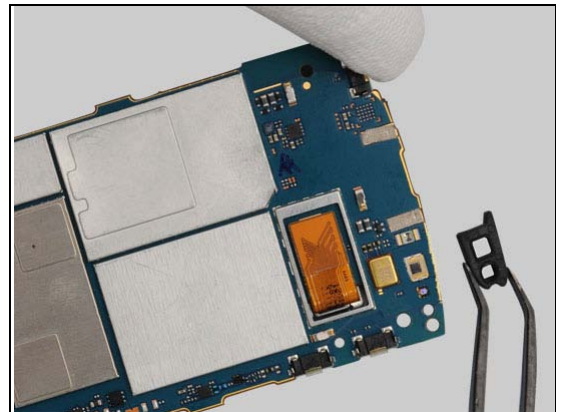
Remove the Gasket Proxy.

***All remains of the adhesive should be removed.
Scrap! Not to be reused!***

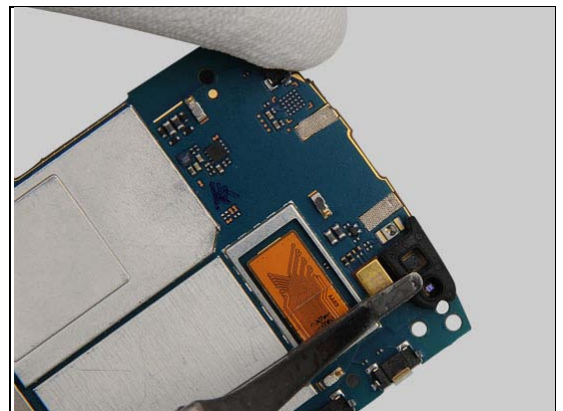


INSTALLATION

Mount a new Gasket Proxy.



Press to secure its attachment.



Replacement

4.30 Gasket RGB LED

Follow the 3.1 – 3.5 Disassembly instructions.
 Carry out the Removal as described below.
 Prepare the new Gasket RGB LED.
 Carry out the Installation as described below.
 Follow the 5.3 – 5.7 Reassembly instructions.

REMOVAL

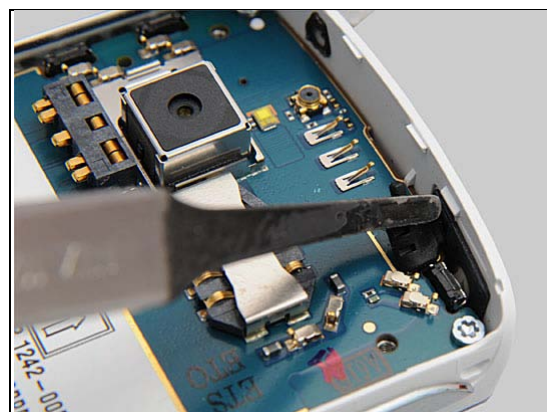
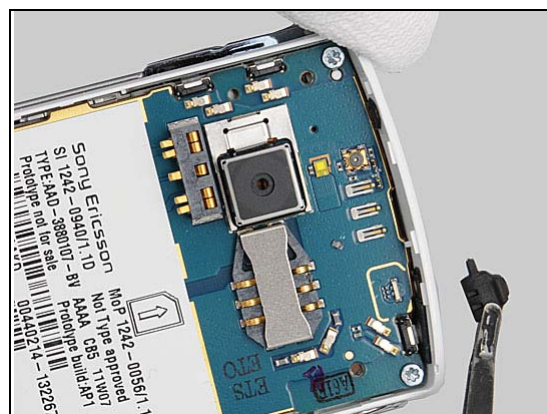
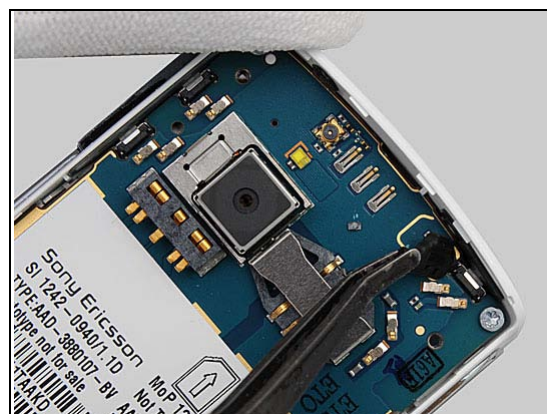
Remove the Gasket RGB LED.

**All remains of the adhesive should be removed.
 Scrap! Not to be reused!**

INSTALLATION

Mount a new Gasket RGB LED.

Press to secure its attachment.



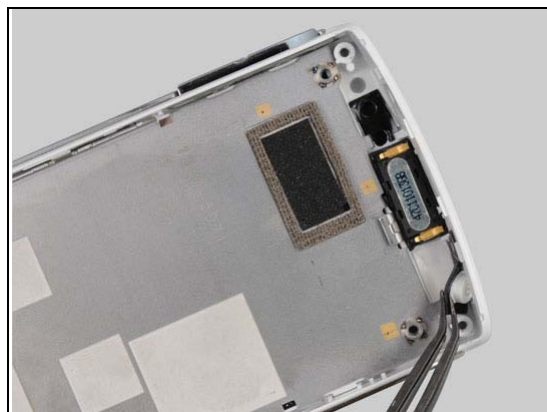
Replacement

4.31 Key On/Off

*Follow the 3.1 – 3.5 Disassembly instructions.
Carry out the Removal as described below.
Prepare the new Key On/Off.
Carry out the Installation as described below.
Follow the 5.3 – 5.7 Reassembly instructions.*

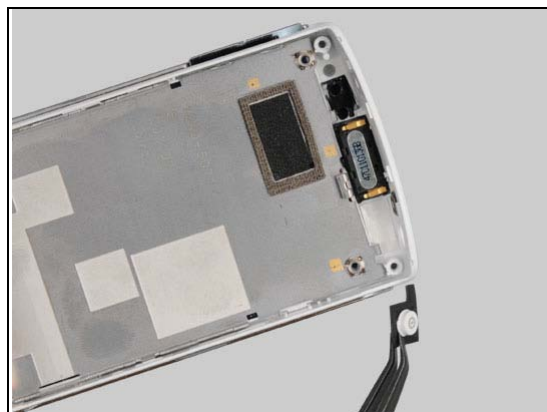
REMOVAL

Remove the Key On/Off.

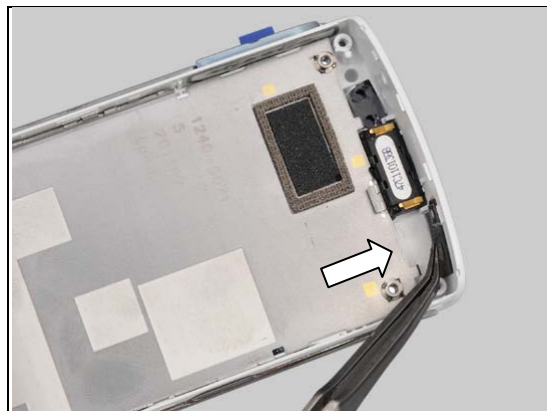


INSTALLATION

Mount a new Key On/Off.



Press to secure its attachment.



Replacement

4.32 Label Mobile Phone

*Follow the 3.1 Disassembly instructions.
Carry out the Removal as described below.
Prepare the new Label Mobile Phone.
Carry out the Installation as described below.
Follow the 5.7 Reassembly instructions.*

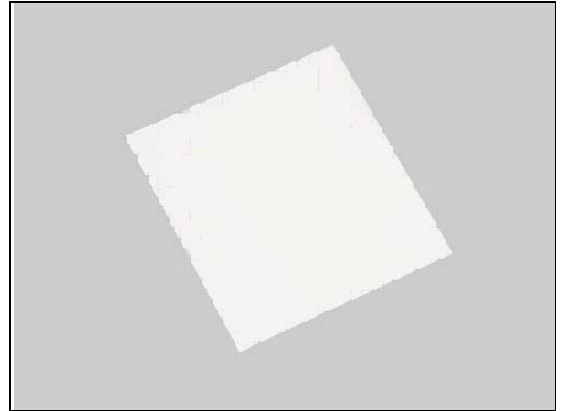
REMOVAL

Read the old Label Mobile Phone and write the information into the 'LabelMake' program before removal.
Carefully remove the Label by using the Flex Film Assembly Tool.

INSTALLATION

Check that the proper label format is loaded in the Zebra printer and write a new Label by using the 'LabelMake' software.
Press along the surface to secure the attachment.

One label only is allowed!



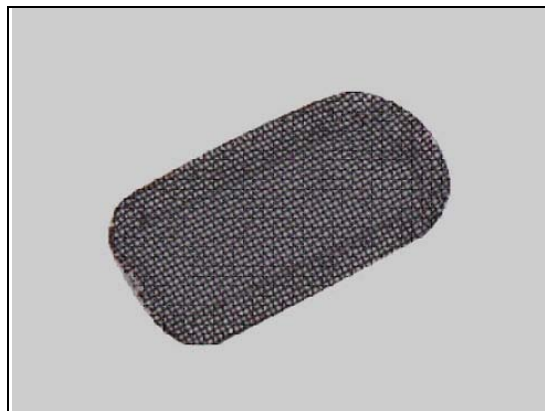
Replacement

4.33 Net Loudspeaker mesh

*Follow the 3.1 Disassembly instructions.
Carry out the Removal as described below.
Prepare the new Net Loudspeaker mesh.
Carry out the Installation as described below.
Follow the 5.7 Reassembly instructions.*

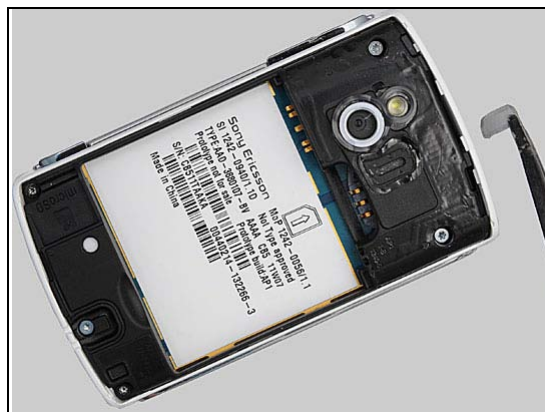
REMOVAL

Remove the Net Loudspeaker mesh.



INSTALLATION

Mount a new Net Loudspeaker mesh.



Press to secure its attachment.



Replacement

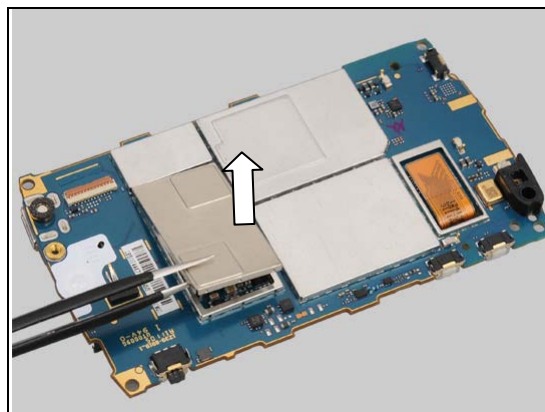
4.34 Shield Can Lid ABB

*Follow the 3.1 – 3.5 Disassembly instructions.
Carry out the Removal as described below.
Prepare the Shield Can Lid ABB.
Carry out the Installation as described below.
Follow the 5.3 – 5.7 Reassembly instructions.*

REMOVAL

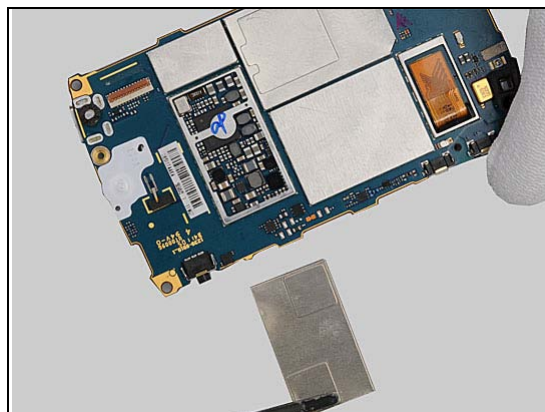
Unsnap the corners of the Shield Can Lid ABB with a pair of Tweezers and remove it.

Scrap the Shield Can Lid, it shall not be reused!



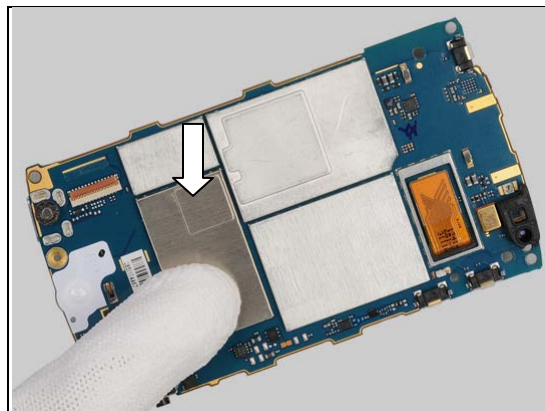
INSTALLATION

Mount a new Shield Can Lid ABB.



Press to snap it.

**Press only on the edges of the Shield Can Lid.
Not in the middle of the Shield Can Lid.**



Replacement

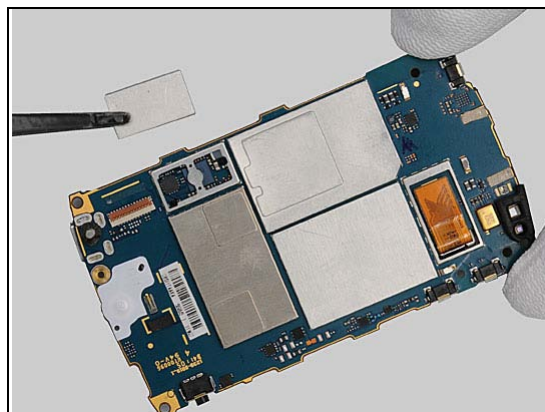
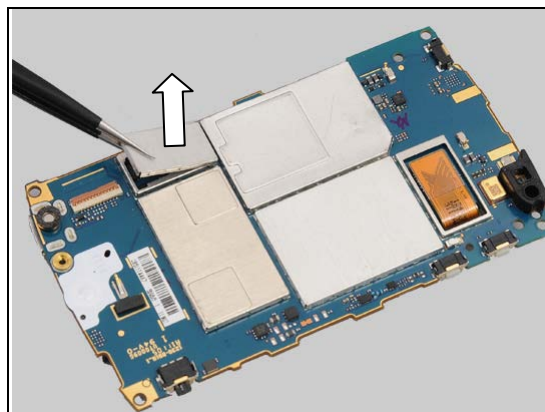
4.35 Shield Can Lid BT/WLAN

Follow the 3.1 – 3.5 Disassembly instructions.
 Carry out the Removal as described below.
 Prepare the Shield Can Lid BT/WLAN.
 Carry out the Installation as described below.
 Follow the 5.3 – 5.7 Reassembly instructions.

REMOVAL

Unsnap the corners of the Shield Can Lid BT/WLAN with a pair of Tweezers and remove it.

Scrap the Shield Can Lid, it shall not be reused!

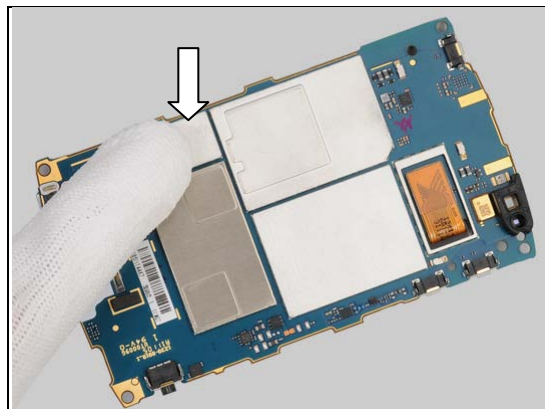


INSTALLATION

Mount a new Shield Can Lid BT/WLAN.

Press to snap it.

**Press only on the edges of the Shield Can Lid.
 Not in the middle of the Shield Can Lid.**



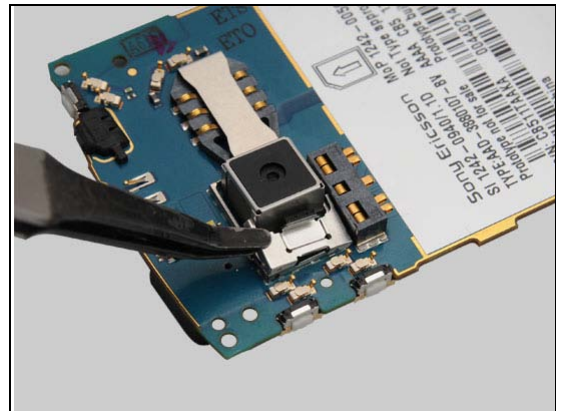
Replacement

4.36 Shield Can Lid Camera

*Follow the 3.1 – 3.3 Disassembly instructions.
Carry out the Removal as described below.
Prepare the new Shield Can Lid Camera.
Carry out the Installation as described below.
Follow the 5.5 – 5.7 Reassembly instructions.*

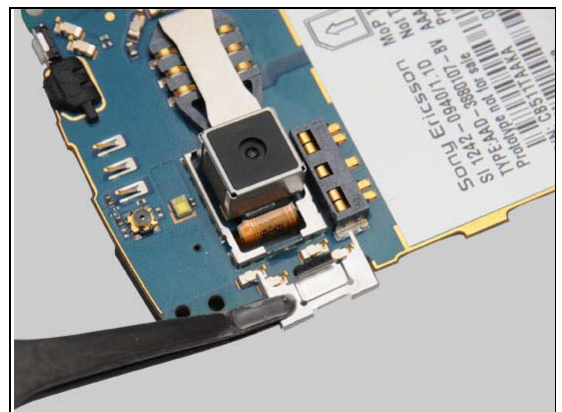
REMOVAL

Lift up to remove the Shield Can Lid Camera.

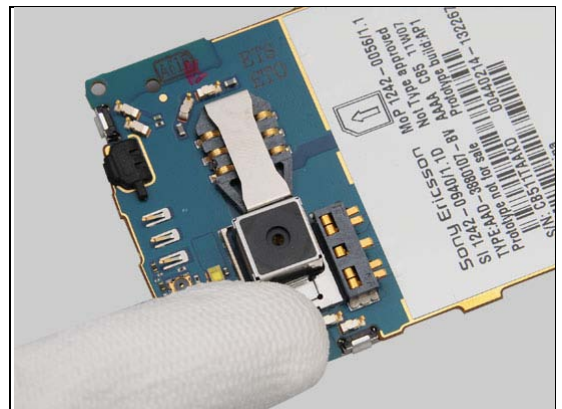


INSTALLATION

Mount the Shield Can Lid Camera.



Press to snap it.



Replacement

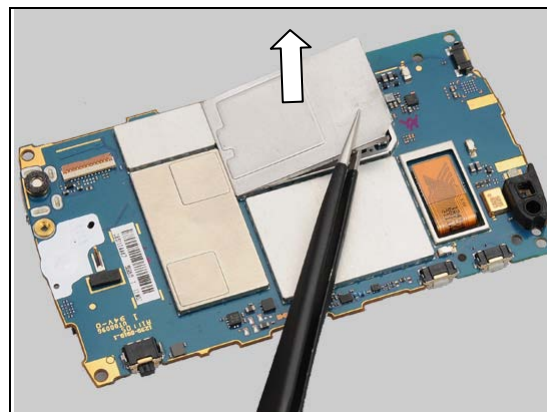
4.37 Shield Can Lid DBB

Follow the 3.1 – 3.5 Disassembly instructions.
 Carry out the Removal as described below.
 Prepare the new Shield Can Lid DBB.
 Carry out the Installation as described below.
 Follow the 5.3 – 5.7 Reassembly instructions.

REMOVAL

Unsnap the corners of the Shield Can Lid DBB with a pair of Tweezers and remove it.

Scrap the Shield Can Lid, it shall not be reused!

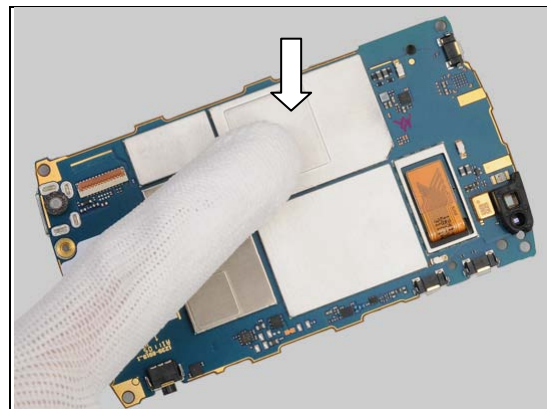
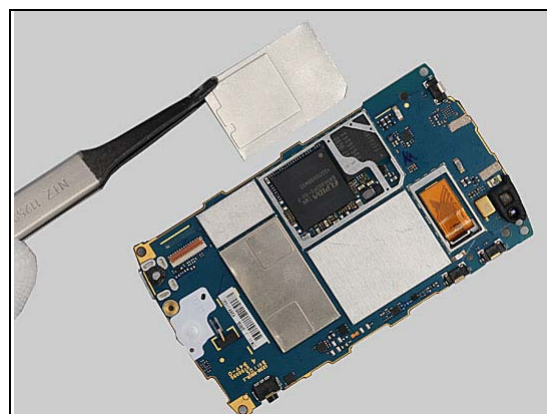


INSTALLATION

Mount a new Shield Can Lid DBB.

Press to snap it.

**Press only on the edges of the Shield Can Lid.
 Not in the middle of the Shield Can Lid.**



Replacement

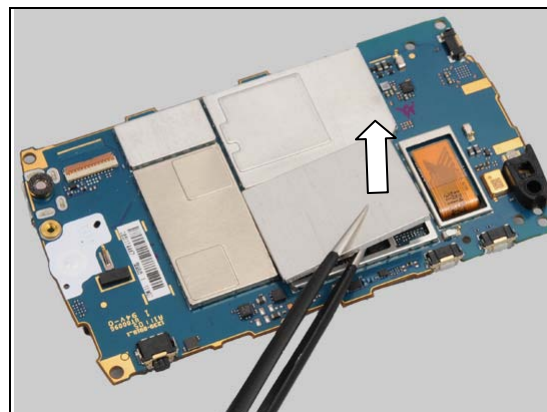
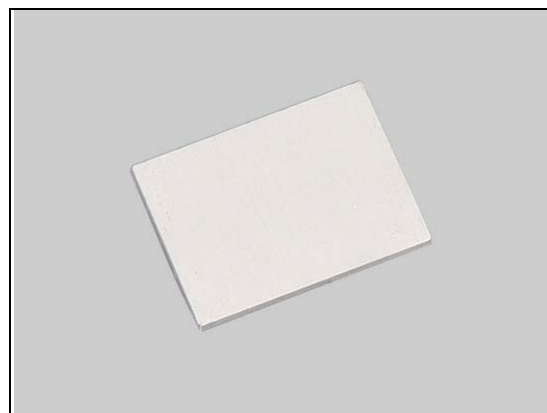
4.38 Shield Can Lid RF

*Follow the 3.1 – 3.5 Disassembly instructions.
Carry out the Removal as described below.
Prepare the new Shield Can Lid RF.
Carry out the Installation as described below.
Follow the 5.3 – 5.7 Reassembly instructions.*

REMOVAL

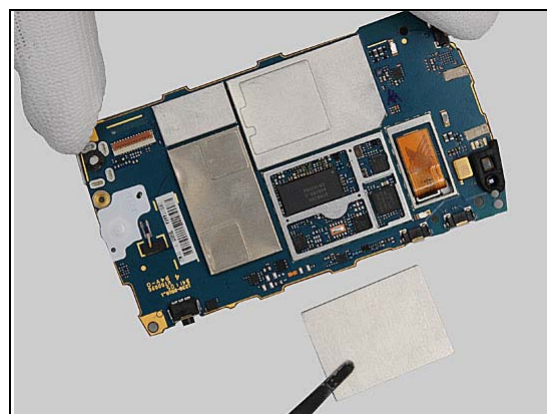
Unsnap the corners of the Shield Can Lid RF with a pair of Tweezers and remove it.

Scrap the Shield Can Lid, it shall not be reused!



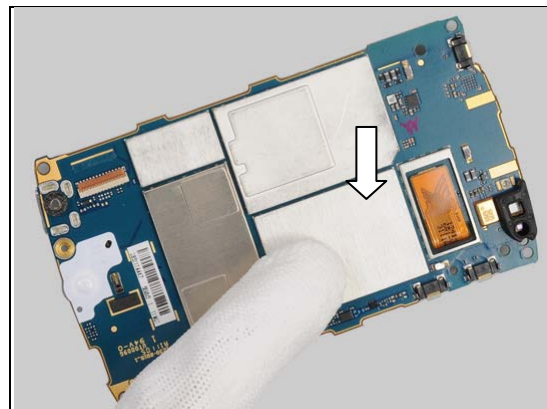
INSTALLATION

Mount a new Shield Can Lid RF.



Press to snap it.

**Press only on the edges of the Shield Can Lid.
Not in the middle of the Shield Can Lid.**



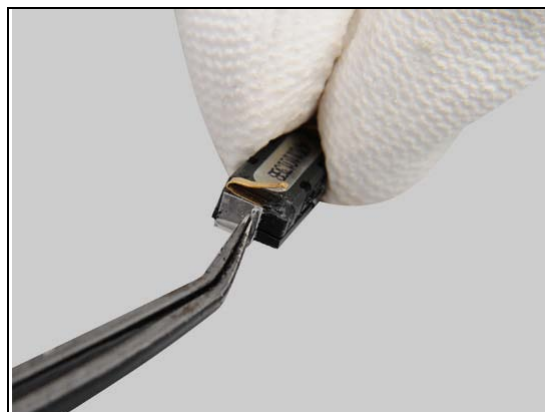
Replacement

4.39 Tape Proximity Reflective

*Follow the 3.1 – 3.5 Disassembly instructions.
Follow the 4.17 Removal instructions.
Carry out the Removal as described below.
Prepare the new Tape Proximity Reflective.
Carry out the Installation as described below.
Follow the 4.17 Installation instructions.
Follow the 5.3 – 5.7 Reassembly instructions.*

REMOVAL

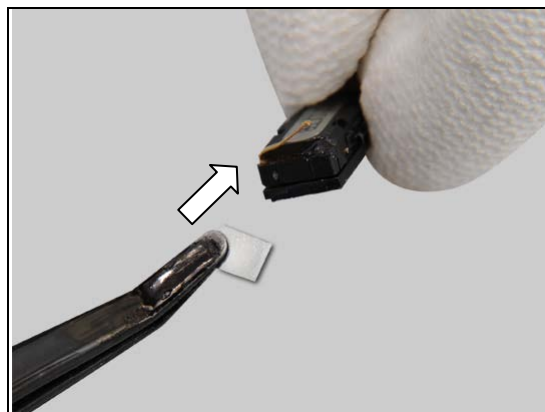
Remove the Tape Proximity Reflective.



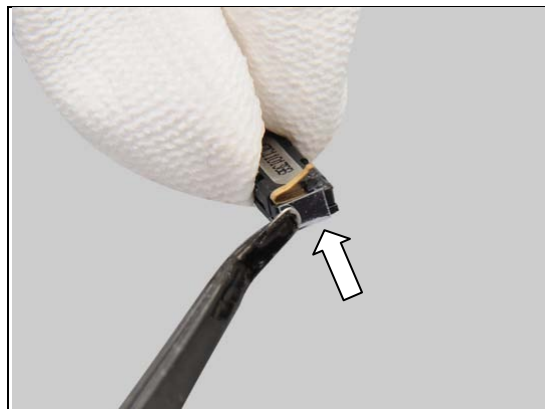
INSTALLATION

Mount a new Tape Proximity Reflective.

Note! The Tape Proximity reflective shall only be mounted in units with a black Front Cover, *never* in a unit with a white Front Cover.



Press to secure its attachment.



Replacement

4.40 Water Indicator 5x5

INSPECTION

Check whether the Water Indicator 5x5 has been activated (reddish color).

Follow the 3.1 – 3.3 Disassembly instructions.

Carry out the Removal as described below.

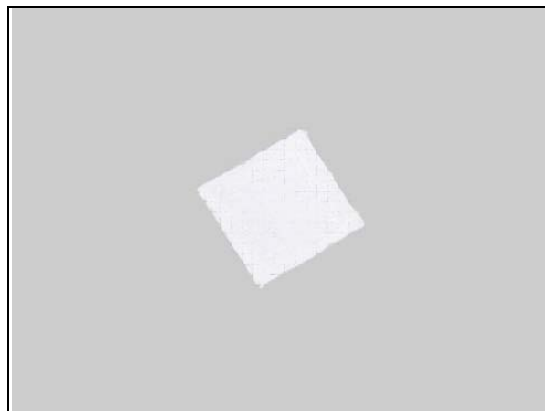
Prepare the new Water Indicator 5x5.

Carry out the Installation as described below.

Follow the 5.5 – 5.7 Reassembly instructions.

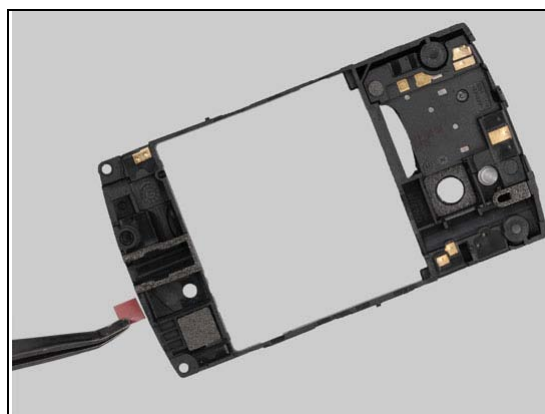
REMOVAL

Remove the Water Indicator 5x5.



INSTALLATION

Mount a new Water Indicator 5x5.



Press to secure its attachment.



Replacement

4.41 Window Camera

*Follow the 3.1 – 3.3 Disassembly instructions.
Carry out the Removal as described below.
Prepare the new Window Camera.
Carry out the Installation as described below.
Follow the 5.5 – 5.7 Reassembly instructions.*

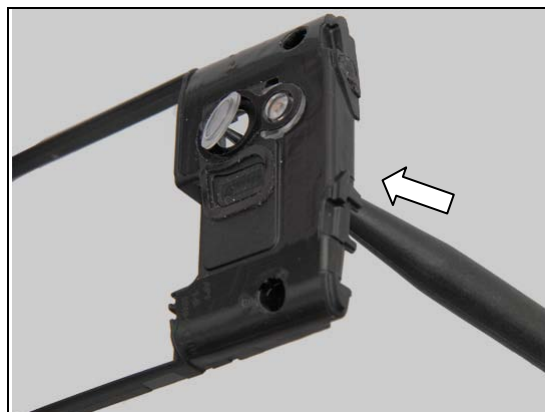
REMOVAL

Push against the old Window Camera from the back side with a Nylon Pointer.

Remove the Window Camera.

INSTALLATION

Mount a new Window Camera.



Replacement: Window Camera

Press to secure its attachment.



Replacement

4.42 Board Swap

4.42.1 Board Swap – Replacement

Follow the 3.1 – 3.5 Disassembly instructions.

Follow the 4.12 Removal instructions!

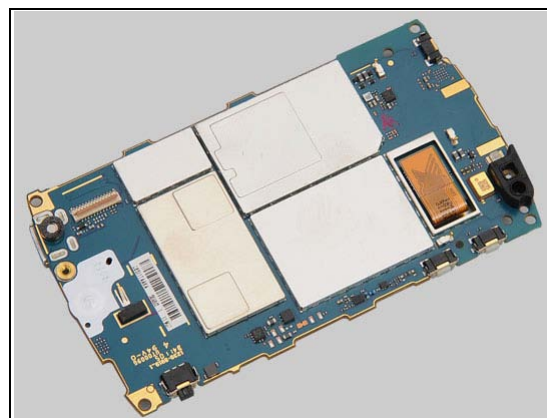
Replace the Swap Board.

Reuse the Camera 5 Mpixel

Follow the 4.9, 4.10, 4.12, 4.14, 4.16, 4.18, 4.27, 4.29 and 4.30 Installation instructions.

Follow the 5.3 – 5.7 Reassembly instructions!

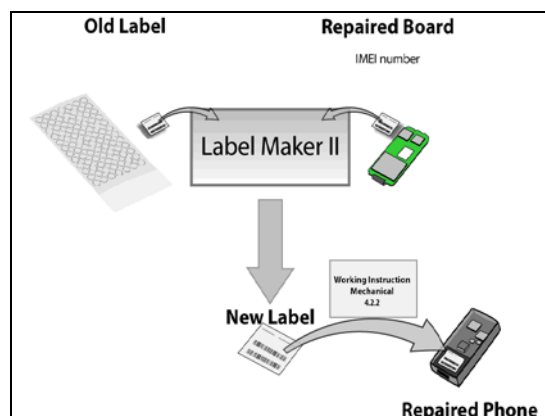
Startup the unit to initialize settings, before performing Customize Phone in Emma



4.42.2 Board Swap – Change Label

CHANGE LABEL

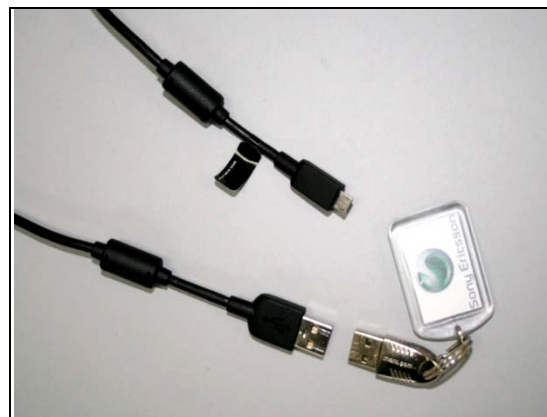
Follow the instructions in the Generic Repair Manual – Build swap for change of label.



4.42.3 Board Swap – Customize of Software

CUSTOMIZE OF SOFTWARE

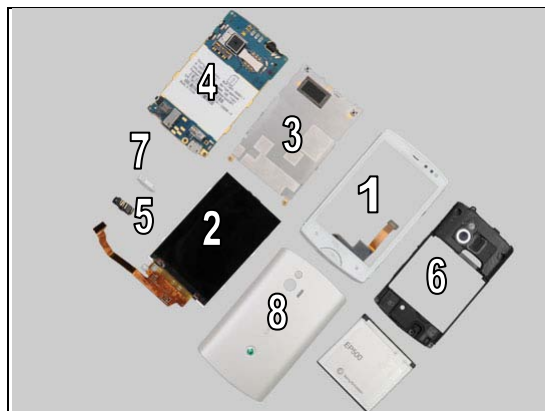
Follow the instructions in the Generic Repair Manual – Build swap for customization of the software.



5 Reassembly

The reassembly is done in the following order:

1. Front Cover
2. Display 3.0 TFT
3. Support LCD
4. Main PBA
5. Audio Jack Connector
6. Inner Frame
7. Cap USB
8. Battery Cover



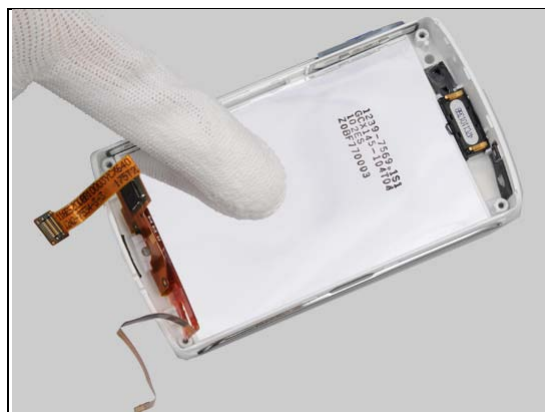
5.1 Front Cover & Display 3.0 TFT

Place the Display 3.0 TFT into the Front Cover.

Do not touch the front of the Display 3.0 TFT.

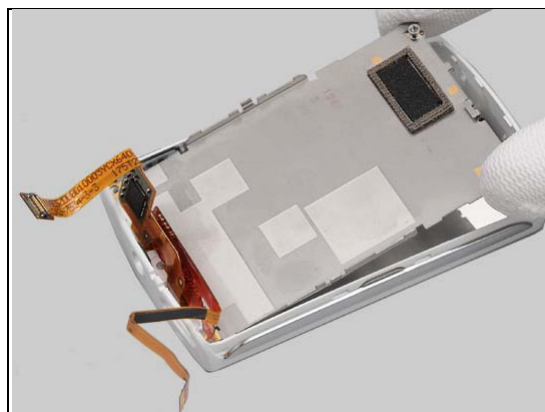


Press gently to secure the position.



5.2 Support LCD

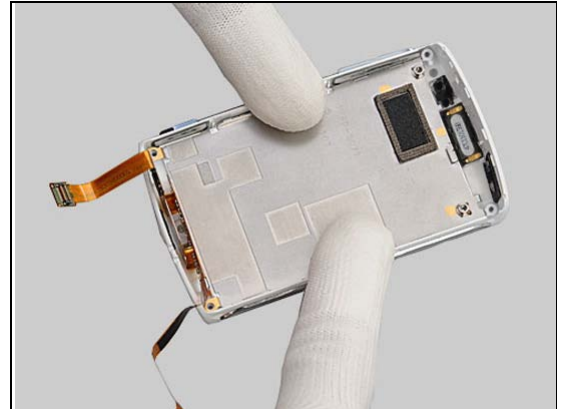
Place the Support LCD into the front unit.





Reassembly

Press to snap the hooks.



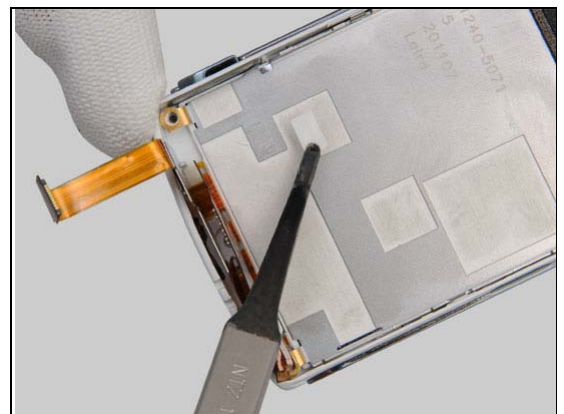
Remove the old Adhesive 3 x 6.

Note!

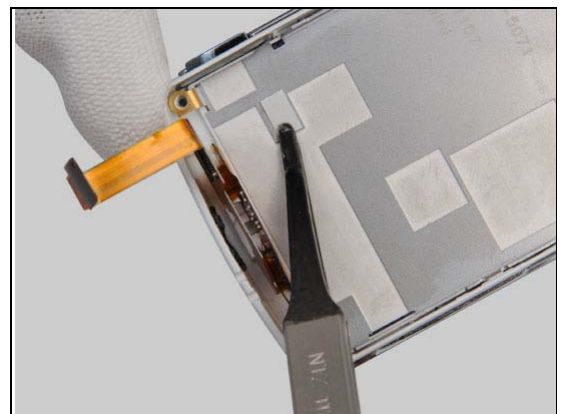
To secure the location of the flex films, shall the Adhesive 3 x 6 been replaced with a new Adhesive every time the flex films have been released from the Support LCD.



Mount a **new** Adhesive 3 x 6 on the LCD support.



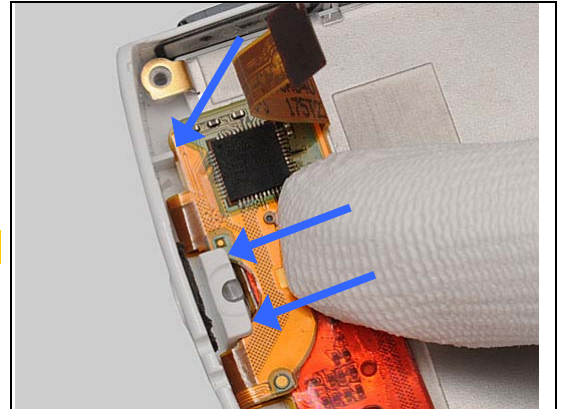
Press to secure the attachment.



Reassembly

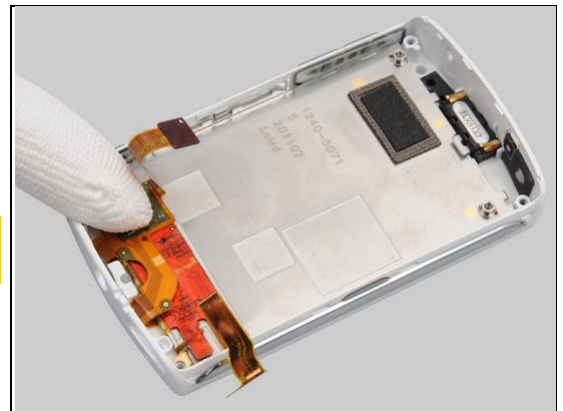
Push the flex film underneath the hooks in the Front Cover and align the stiffener to the location pin.

Secure the position of the flex film carefully.

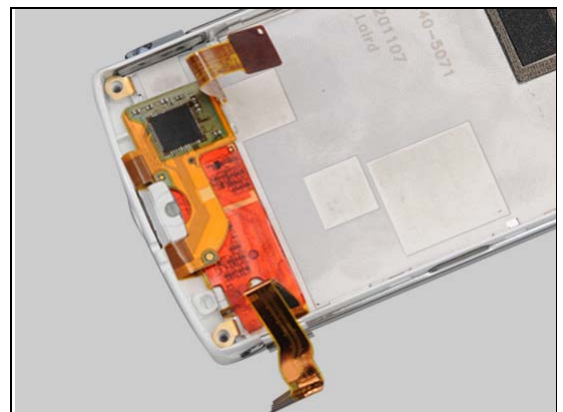


Press the flex film gently to secure its attachment to the Adhesive 3 x 6.

Be careful not to damage the electrical components on the flex films.

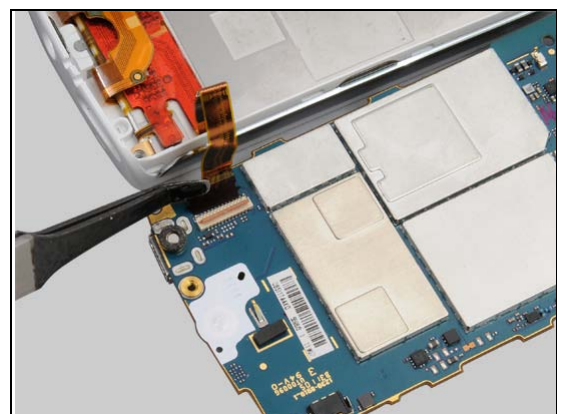


Pre-bend both the flex films before the main PBA is reassembled.



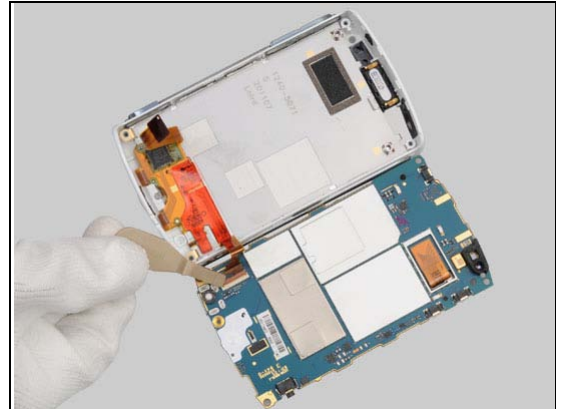
5.3 Main PBA

Place the Main PBA next to the front unit.
Connect the ZIF connector.



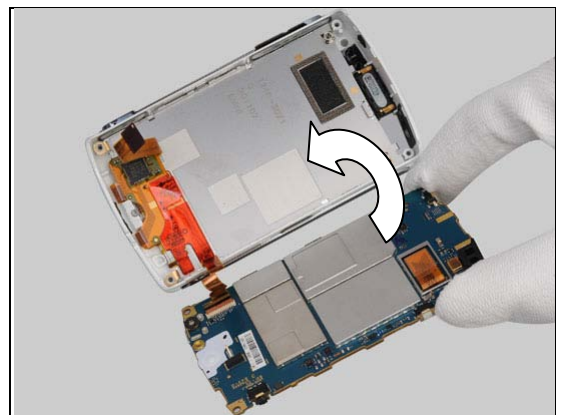
Reassembly

Close the ZIF connector with the Front Opening Tool.
Press to attach the flex film to the Adhesive 7,8 x 1,4.



Turn over to place the Main PBA into the front unit.

Secure the position of the flex films!



Shove the Main PBA into the front unit.

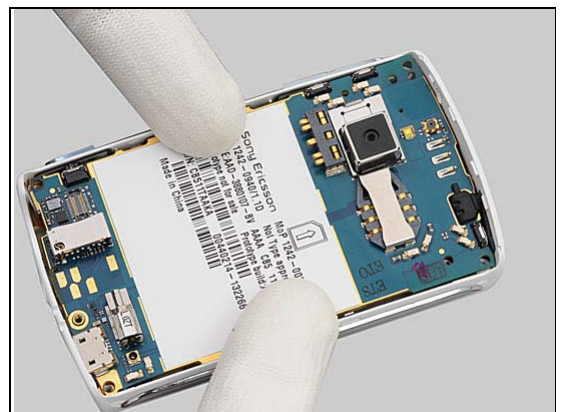
Make sure that the BtB connector is above the Main PBA.

Secure the position of the Micro USB connector.



Press to snap the hooks.

Listen for the click sound.

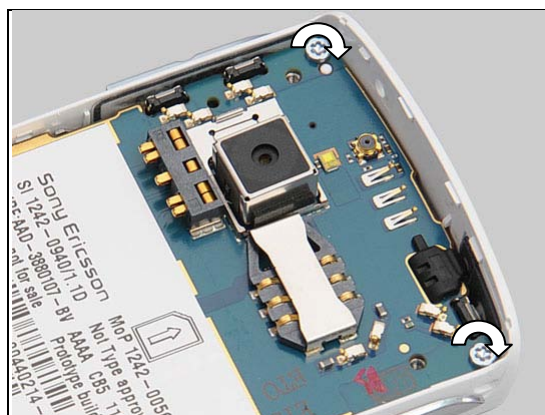


Reassembly

Reconnect the BtB connector.



Apply 18 ± 2 Ncm torque when tightening the two
Screw Other Len:4.5 Diam:1.7 with (T6).

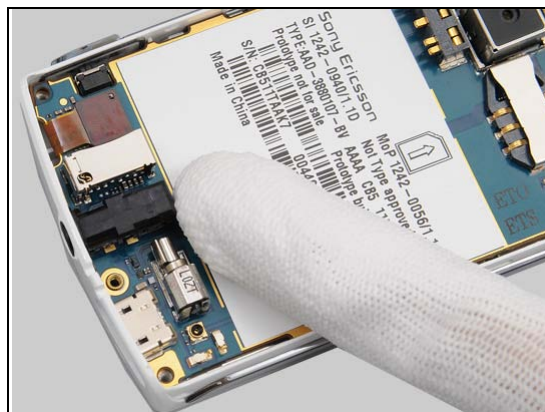


5.4 Audio Jack Connector

Place the Audio Jack connector.



Push it in the hole of the Front Cover.



Reassembly

5.5 Inner Frame

Place the Inner Frame on the unit.



Press to snap the hooks.



Apply 18 ± 2 Ncm torque when tightening the three
Screw Torx Len:3.4 Diam:1.6 with Bits (T5).

Take new screws!



Apply 18 ± 2 Ncm torque when tightening the two
Screw Torx Len:5.7 Diam:1.7 with Bits (T5).



Reassembly

5.6 Cap USB

Place the Cap USB tail through the hole.

Take a new Cap USB.



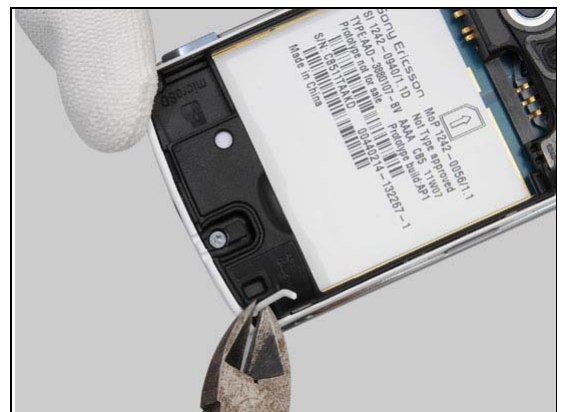
Pull the tail of Cap USB to make the bump into the hole.



Press to secure its position.



Cut the tail of the Cap USB 0.8mm after the bump.



Reassembly

5.7 Battery Cover

Reinstall the Battery.



Press the Battery in place with a finger.



Place the Battery Cover in the correct position.



Press to snap the hooks.





6 Country of Origin Barcodes for Brazil

Below is a link to a list of countries of origin. If you are printing a Brazil or VIVO label, scan the barcode corresponding to the correct country of origin for the “Fabricado” field.





7 Revision History

Rev.	Date	Changes / Comments
1	2011-July-15	Initial release
2	2011-Sept-30	General adjustment to improve the quality.
3	2011-Oct-13	Added a note to 4.7 <i>Touch panel calibration has to be done on units produced before W1135</i>
4	2011-Oct-27	Changed the Touch panel calibration note to all replaced units.
5	2011-Nov-22	One new commercial model included - S51SE Updated the Touch panel calibration note with the application number.
6	2012-June-26	Front Cover updated with startup info.
7	2012-July-11	Board SWAP – replacement updated